



# WATERSCAPES

THE CONDOMINIUM

[WWW.MONARCHGROUP.NET](http://WWW.MONARCHGROUP.NET)



# WATERSCAPES

PRESTIGE FINISHES



## BUILDING FEATURES

- Waterscapes is the fifth and final phase of Monarch's master planned Waterview community
- Soaring elliptical tower with a 4 storey podium that houses a mix of retail, recreational and residential.
- This elliptical tower captures the magnificence of Lake Ontario with sprawling forever views from sunrise to sunset
- Professionally designed and decorated stunning 2 storey lobby overlooking Lake Ontario
- Corridors and suite entry doors professionally designed and detailed by interior designer
- One uniformed 24 hour, 7 days a week concierge
- Inviting and private landscaped interior courtyard
- Eco-friendly green roof over the podium
- Beautifully landscaped rooftop retreat with bbq and leisure area overlooking Lake Ontario and the city.
- Three elevators to serve the tower and five to serve the podium
- Two designer decorated guest suites for your overnight guests
- Suites are designed with spacious 6' deep balconies\* offering premium outdoor entertaining areas
- Floor to ceiling expansive windows in your suite\* with breathtaking panoramic views
- One storage locker unit included
- Mailroom conveniently located beside front lobby
- Car wash bay in underground parking garage available to residents
- Bicycle storage room, via card access with security camera monitored at concierge, complete with convenient air pump
- Water filtration system for the building's water supply
- Property Management office on site

## GREEN FEATURES

Environmental issues affect the world we live in. Factors such as energy and water conservation, as well as the quality of the air we breathe. Monarch takes these issues seriously. As a member of the Canada Green Building Council (CaGBC), Monarch is committed to developing a greener lifestyle in its condominiums. We have taken the lead by incorporating numerous environmental initiatives that reduce total building energy consumption, and that will play a part in providing suite owners with greener, more energy-efficient surroundings.

- Individual suite metering of hydro consumption, giving you more control over your energy consumption
- Individually controlled year round heating and air conditioning heat pump system will allow residents to control their suite's energy costs

- High efficiency boilers for heating and domestic hot water will reduce energy consumption
- Eco-friendly green roof over the podium
- Energy Star ® rated appliances to save on energy costs and consumption:
  - High efficiency dishwasher
  - High efficiency refrigerator
  - High efficiency front load washer
- Carbon Monoxide (CO) detection system designed to minimize the operation of the exhaust fans in the parking garage, resulting in energy savings and reduced noise pollution.
- Indoor Air Quality certification for suite carpets by the Canadian Carpet Institute under the Carpet Testing Program.
- Low emission suite Laminate flooring
- Low VOC (Volatile Organic Compounds) paint will ensure better indoor air quality
- Energy efficient compact fluorescent bulbs installed in each suite in place of incandescent light bulbs
- Lighting in common areas (amenity areas only) to include motion occupancy sensors to help reduce energy costs and frequent maintenance
- Double glazed, low E (emission), insulated glass window units will increase energy efficiency
- Bicycle parking location to encourage alternate transportation
- Automated recycling collection system to sort waste and recyclable products to encourage residents to participate in waste reduction.

## CLUB WATERSCAPES

**Waterscapes** - The Designer decorated special occasion/party room complete with caterer's kitchen and bar located on the rooftop of the podium. Opening onto a terrace overlooking Lake Ontario and The Village Court with access to the Private Waterscapes Party Room patio with bbq

**Aqua** - Submerge yourself into the serenity of the indoor swimming pool, or rejuvenate yourself in the hot tub. Refresh in the tranquil saunas located in separate men's and ladies change rooms complete with lockers and showers

**Silver Screen** - Equipped theatre for private screenings with cinema style seating, big screen viewing, projector and surround sound

**Marine Room** - Conference/Business Room, where you consult and hold your business meetings

**Ocean Lounge** - Sports lounge with billiards table and TV located adjacent to the Waterscapes party room

**Shore Fitness** - Dynamic Fitness room with cardio, yoga and aerobics area, offering TV viewing while you work out complete with commercial grade fitness equipment

**Pet-tie Wash** - Exclusive room to wash and clean your pampered pets after a stroll along the numerous waterfront trails at your doorstep

## EXTRAORDINARY LIVING SPACES

- Suites designed with spacious 6' deep balconies\* offering premium outdoor entertaining areas and panoramic views of the city, courtyard and/or lake
- Sliding doors with screens to outside balcony, patio or terrace \*
- Double glazed, Low E (emission), windows provided with screens on operating windows
- Individually controlled in-suite heat pump system offering on-demand heating and air conditioning
- Ceiling heights of approximately 9 ft. throughout. Ceiling heights are exclusive of bulkheads required for mechanical purposes which will be less than 9'
- All ceilings to be white stippled. Excluding kitchen, bathrooms, laundry and/or storage rooms\* where the ceiling will be smooth and painted in flat white.
- Low VOC, washable and non-yellowing paint. Semi-gloss off-white paint throughout kitchen, laundry room, powder room and bathrooms. Flat latex off white paint in all other areas
- All trim painted in off-white semi-gloss
- Choice of plank strip laminate flooring in a range of appealing colours and styles from Vendor's expansive selection of standard samples throughout living rooms\*, dining rooms\*, kitchen\*, hallways\*, foyer\*, bedroom\* and dens\*
- Contemporary styled 7ft swing interior doors with metal lever hardware
- 5" baseboards with coordinating door casings
- Plastic coated wire shelving in all closets
- Contemporary European style white receptacles and rocker panel switches throughout suite.
- Den entry door(s) (if applicable) feature easy sliding contemporary style\* or swing French door\*

## FOYER

- Interior designed suite entry with solid core entry door, with security observation port and contemporary brushed metal lever hardware
- Swing closet door or mirrored sliding closet door\*
- Choice of plank strip laminate flooring, ceramic tile or porcelain tile\* in a range of appealing colours and styles from Vendor's expansive selection of standard samples

*continued on back* ➔

## LAUNDRY

- Convenient in suite laundry room\* with front load stacked dryer vented to exterior and Energy Star® front load washer
- Vendor's pre-selected easy care, white ceramic tile flooring\* in laundry room
- Bathroom floor, porcelain tile or ceramic tiles, from Vendor's standard samples, to continue into laundry closet when it forms part of the bathroom\*
- Separate laundry sink, side by side front load washer and front load dryer\*

## YOUR BATHROOM OASIS (MAIN AND/OR ENSUITE)

- Unique, contemporary designed vanity. Cabinet doors with decorative edge trimming. Choice of colour for vanity cabinets in a range of appealing colours from Vendor's expansive selection of standard samples
- Ensuite bathroom vanity features a lockable medicine drawer
- Contemporary three level shelving unit with separate light fixture and separate vanity mirror exclusively designed for Waterscapes
- Cultured marble countertop with a chic integrated square washbasin and contemporary styled single lever faucet
- Porcelain or ceramic tile flooring in a range of appealing colours and styles from Vendor's expansive selection of standard samples
- Tub enclosure to include porcelain or ceramic wall tile from a large selection of colours and styles from Vendor's expansive selection of standard samples \* to ceiling (excluding ceiling)\*
- Separate shower stall with framed glass door to include porcelain or ceramic tile from a large selection of colours and styles from Vendor's expansive selection of standard samples on shower wall to ceiling (excluding ceiling) with ceramic base and separate vapour resistant ceiling pot light in shower with switch\*
- Bathrooms with tub and shower receive:
  - Separate 5' long relaxing soaker tub to include one choice of porcelain tile or ceramic tile on tub enclosure wall, not to exceed 24" in height, from Vendor's expansive selection of standard samples\*
  - Separate shower stall with framed glass door to include porcelain or ceramic tile from Vendor's expansive selection of standard samples on shower wall to ceiling (excluding ceiling) with ceramic base and separate vapour resistant ceiling pot light in shower with switch\*
- Contemporary styled chrome bathroom fixtures (soap dish in tub/shower to be white)
- Soothing spa inspired Rain Shower style showerhead for bathrooms with tub and shower\*
- Soothing spa inspired Rain Shower style showerhead including a separate hand held body spray for bathrooms with separate shower stall\*
- Pressure balanced mixing valve for tub/shower faucets providing temperature control

- Exterior vented exhaust fan in all bathroom
- Privacy lock on all bathroom doors

## DREAM KITCHEN

- Unique, contemporary designed gourmet kitchens with decorative edge trimming on cabinet doors. Full depth fridge upper cabinet. Select cabinets offering horizontal awning style extended height uppers\* Choice of colour for kitchen cabinets in a range of appealing colours from Vendor's expansive selection of standard samples
- Under cabinet lighting\*
- Choice of granite kitchen countertop with square edge from Vendor's expansive selection of standard samples
- Oversized, stainless steel, under mounted, rectangular or square single deep sink\*
- Contemporary single lever pull out spray faucet
- Complete brand name stainless steel appliance packages, including:
  - Package 1: Space Saver kitchens:**
    - 24" space saver fridge and 24" self clean oven with ceran glass cook top as noted on plan\*
    - Energy Star® built-in dishwasher
    - Over the range microwave oven with hood fan
  - Package 2: Suites under 1, 000 sq ft: (excluding space saver kitchens)**
    - Energy Star® KitchenAid frost free bottom freezer refrigerator with integrated ice maker
    - Slide in self clean oven with ceran glass cook top
    - Energy Star® built-in dishwasher
    - Over the range microwave oven with hood fan
  - Package 3: Suites over 1, 000 sq ft: (excluding space saver kitchens)**
    - Energy Star® KitchenAid frost free bottom freezer refrigerator with integrated ice maker
    - Built-in cook top
    - Built-in wall oven
    - Energy Star® built-in dishwasher
    - Over the range microwave oven with hood fan
- Contemporary low voltage track lighting system with adjustable light heads
- Choice of mosaic glass tile, ceramic tile or porcelain tile backsplash in a range of colours and styles from Vendor's expansive selection of standard samples\*
- Pantry and/or Breakfast bar\*
- Kitchen Island with temperature control wine fridge\*

## YOUR BEDROOM RETREAT

- Built-in, ultra efficient closet organizers to maximize storage located in master bedroom closet(s)\*
- Contemporary styled bedroom closet doors, swing closet doors or mirrored sliders\*
- Walk in closets\*
- Bedroom entry door(s) feature easy sliding solid core contemporary style doors or contemporary styled swing interior doors with metal lever hardware\*

- Interior bedrooms feature easy sliding glass panel bedroom doors \*

## PEACE OF MIND AMENITIES

- One uniformed 24 hour, 7 days a week concierge
- Personally encoded in suite speaker intrusion alarm and key pad with digital display, featuring suite to concierge digital display communication monitored by concierge
- Residents' underground parking accessed via a secure garage door operated by personal remote
- Card access from underground parking to elevator lobby
- Card access to main entrance
- All exterior doors from common areas and amenities monitored at concierge desk
- Enterphone system at main entrance complete with in-suite monitoring facility through TV cable and operates with suite land line phone or mobile phone
- Security cameras linked to concierge for surveillance monitoring
- Underground security system complete with security key hand held device to activate alarm. Two-way communication system from underground to concierge. Emergency alert works only in the underground parking.
- Convenient and secure visitor parking on the uppermost parking level
- Well lit and painted white underground parking garage for security
- For added safety, the parking garage is well ventilated and protected by a fire sprinkler system
- Strategically located mirrors in the underground parking garage to assist with traffic flow

## ELECTRICAL

- 100amp service panel with circuit breakers and copper wiring within suite (110/208 volt)
- Pre-wired for cable TV in all bedrooms, living/dining rooms and den\*
- Pre-wired for telephone line in all bedrooms, living/dining rooms and den\*
- Smoke and heat detectors
- Ceiling light fixtures in foyer, hallway, kitchen, bedroom, den\* and walk-in closet\*
- Capped ceiling outlet in dining room\*
- Cable wiring for high speed internet
- All balconies and terraces to have electrical outlets

\*In applicable suites as per Vendor's plan.

Purchasers understand that the texture and smoothness of the finish on concrete surfaces will be to concrete forming industry standards. The Vendor shall have the right to substitute other products and materials for those listed in this schedule or provided for in the plans and specifications provided that the substituted materials are of a quality equal to, or better than, the products and materials so listed or so provided. Colours and specific finishes will depend on Vendor's package as selected. All specifications, dimensions and materials are subject to change without notice. E.& O.E. Tarion Warranty Program All Suites protected under Tarion (formerly The Ontario New Home Warranty Program).

# AQUA

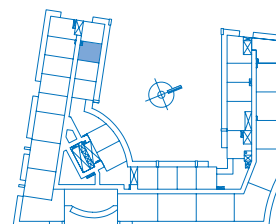
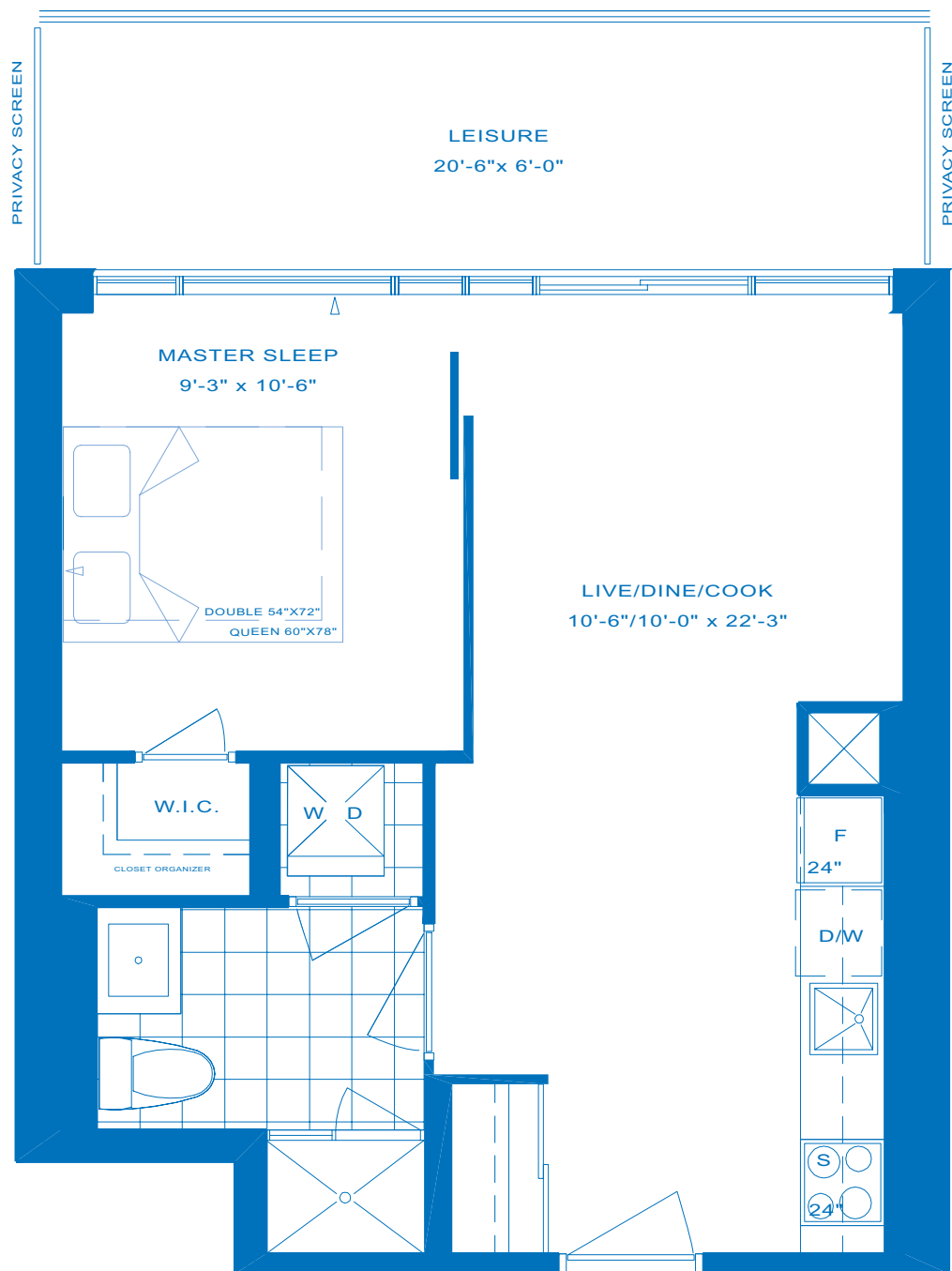
ONE BEDROOM

INTERIOR - 465 SQ.FT.

BALCONY - 110 SQ.FT.

**TOTAL LIVING AREA - 575 SQ.FT.**

# C465



FLOORS 2-4



LAKE ONTARIO

**WATERSCAPES**  
THE CONDOMINIUM

[WWW.MONARCHGROUP.NET](http://WWW.MONARCHGROUP.NET)

**Monarch**

Sizes and specifications are subject to change without notice. E.&O.E. Actual usable floor space may vary from any stated floor area. Floor measurements, if any, were calculated on the middle floor of typical floor plates, such that units on lower floors may have less floor space due to thicker structural members, mechanical rooms, etc. while units on higher floors may have more floor space. Illustration is artist's impression.

# AQUA

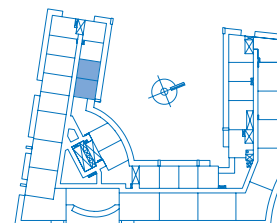
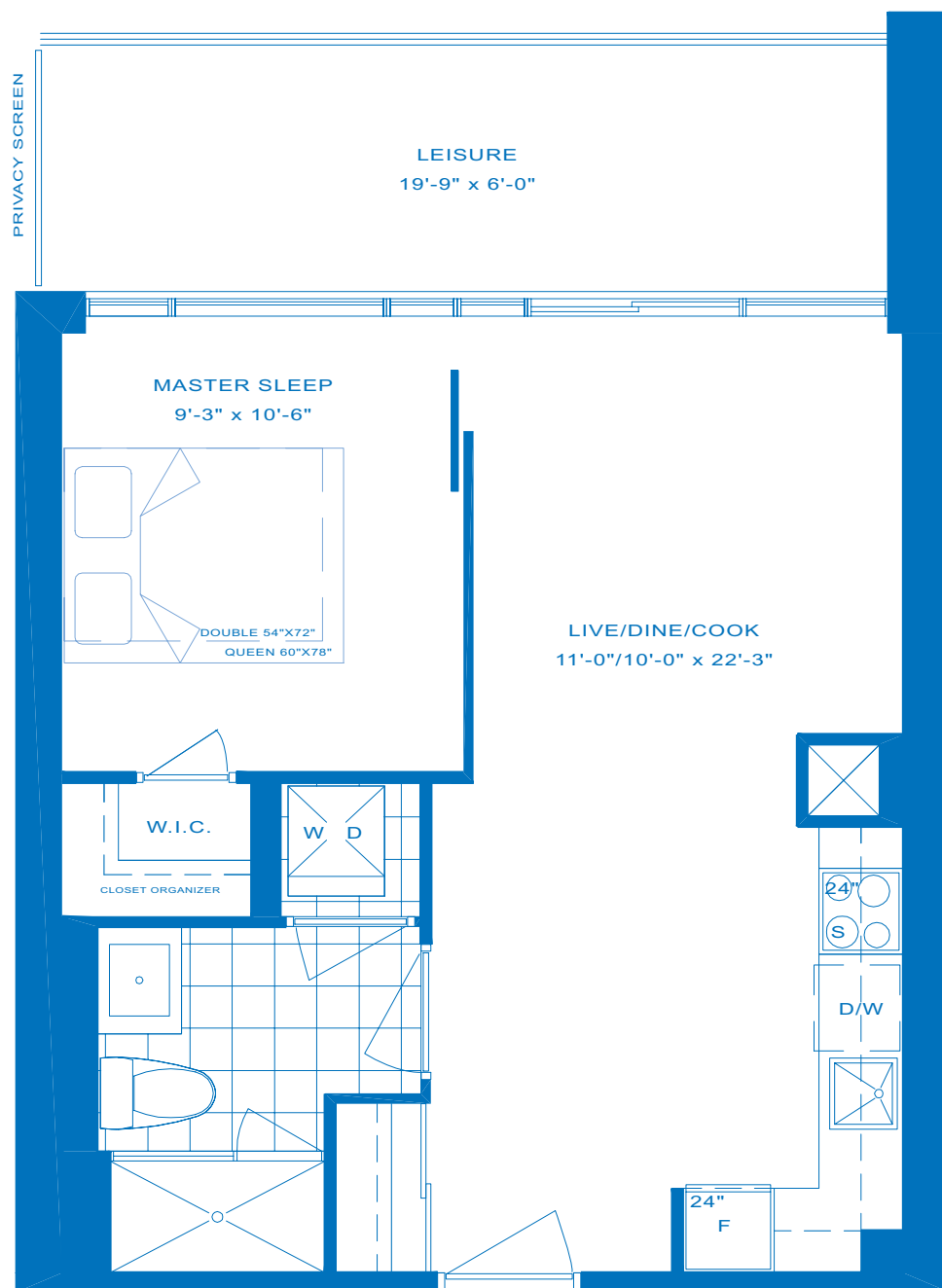
ONE BEDROOM

INTERIOR - 480 SQ.FT.

BALCONY - 105 SQ.FT.

**TOTAL LIVING AREA - 585 SQ.FT.**

# C480



FLOORS 2-4



LAKE ONTARIO

**WATERSCAPES**  
THE CONDOMINIUM

[WWW.MONARCHGROUP.NET](http://WWW.MONARCHGROUP.NET)

**Monarch**

Sizes and specifications are subject to change without notice. E.&O.E. Actual usable floor space may vary from any stated floor area. Floor measurements, if any, were calculated on the middle floor of typical floor plates, such that units on lower floors may have less floor space due to thicker structural members, mechanical rooms, etc. while units on higher floors may have more floor space. Illustration is artist's impression.

# AQUA

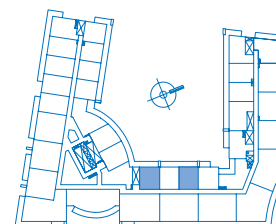
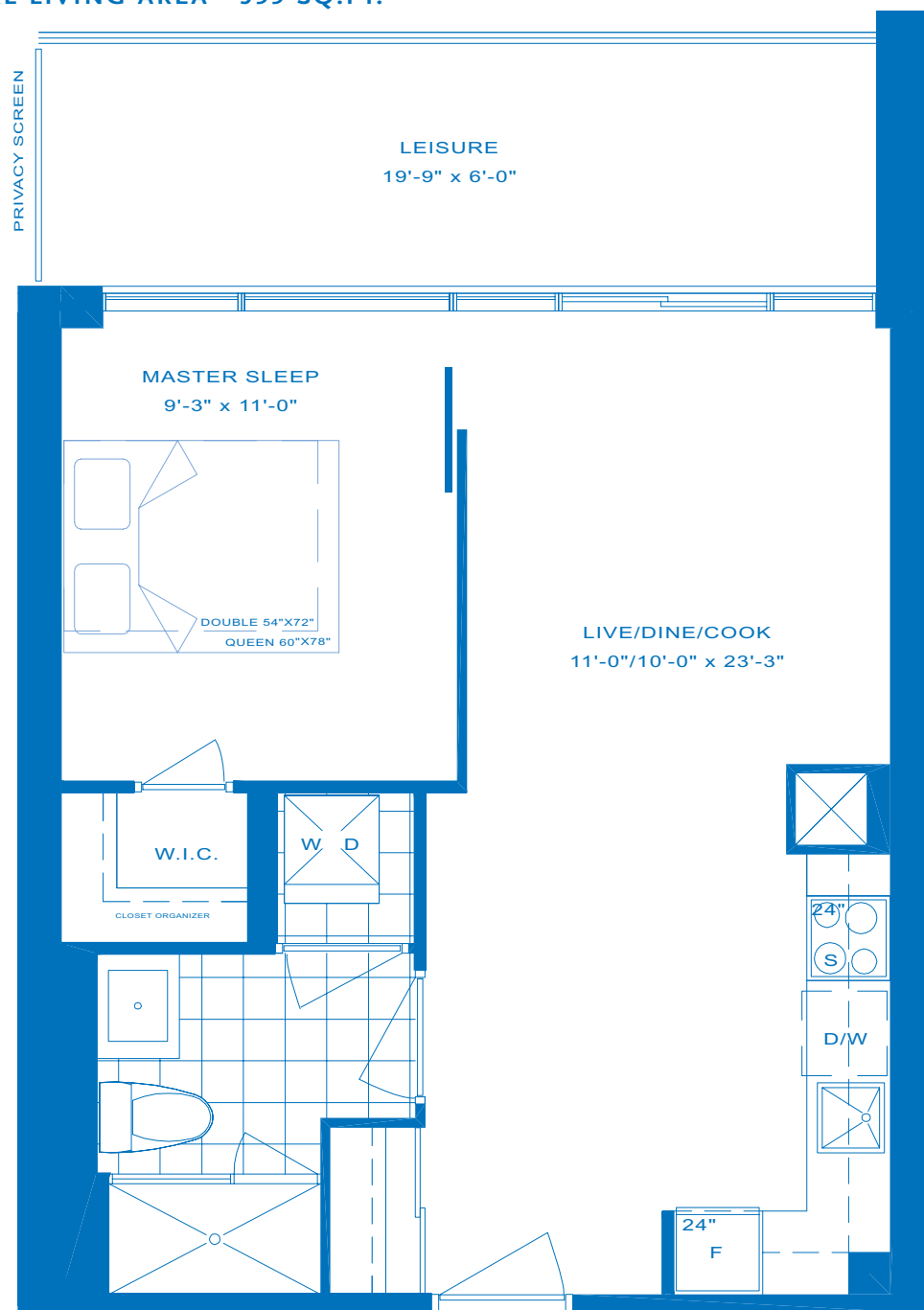
ONE BEDROOM

# C499

INTERIOR - 499 SQ.FT.

BALCONY - 100 SQ.FT.

**TOTAL LIVING AREA - 599 SQ.FT.**



## FLOORS GROUND-4

*Terrace on ground floor.  
Ask a sales representative for details*



**WATERSCAPES**  
THE CONDOMINIUM

[WWW.MONARCHGROUP.NET](http://WWW.MONARCHGROUP.NET)

**Monarch**

Sizes and specifications are subject to change without notice. E.&O.E. Actual usable floor space may vary from any stated floor area. Floor measurements, if any, were calculated on the middle floor of typical floor plates, such that units on lower floors may have less floor space due to thicker structural members, mechanical rooms, etc. while units on higher floors may have more floor space. Illustration is artist's impression.

# AQUA

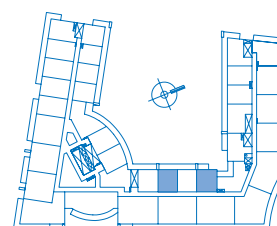
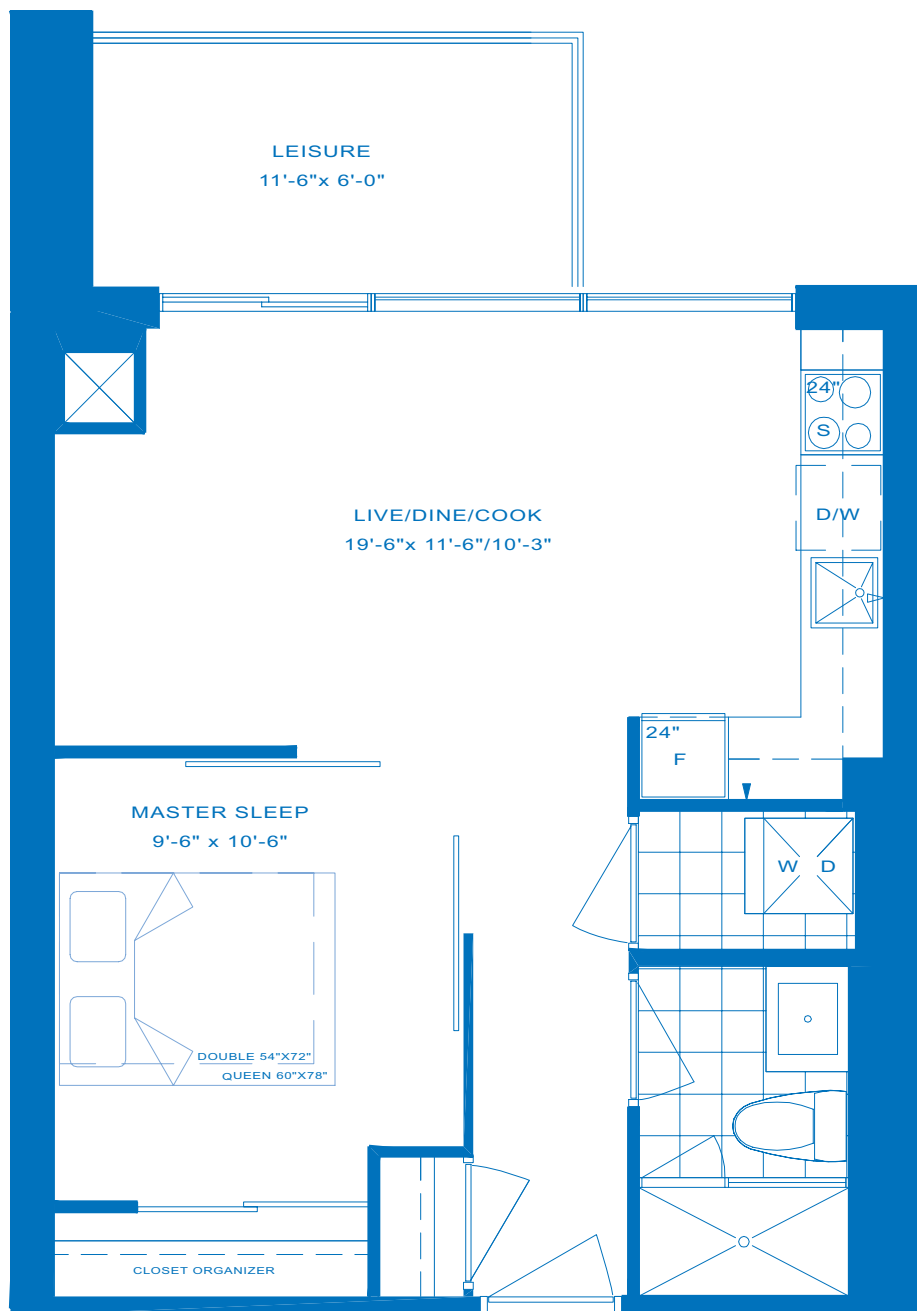
ONE BEDROOM

INTERIOR - 500 SQ.FT.

BALCONY - 60 SQ.FT.

**TOTAL LIVING AREA - 560 SQ.FT.**

# C500



## FLOORS GROUND-4

*Terrace on ground floor  
Ask a sales representative for details*



**WATERSCAPES**  
THE CONDOMINIUM

[WWW.MONARCHGROUP.NET](http://WWW.MONARCHGROUP.NET)

**Monarch**

Sizes and specifications are subject to change without notice. E.&O.E. Actual usable floor space may vary from any stated floor area. Floor measurements, if any, were calculated on the middle floor of typical floor plates, such that units on lower floors may have less floor space due to thicker structural members, mechanical rooms, etc. while units on higher floors may have more floor space. Illustration is artist's impression.

# AQUA

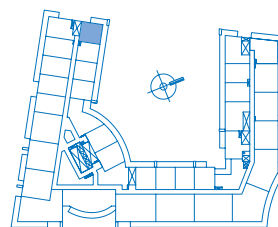
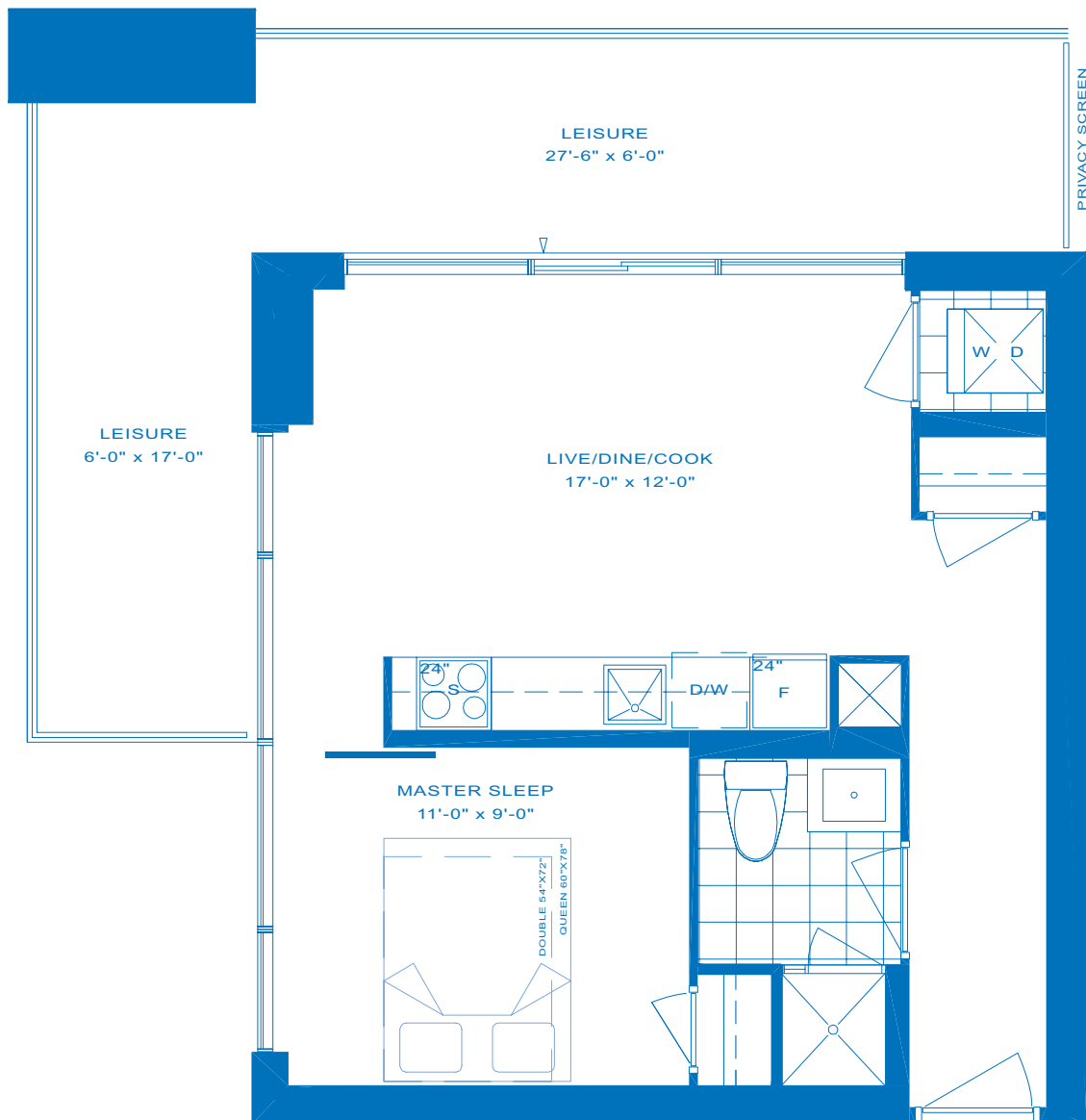
ONE BEDROOM

# C505

INTERIOR - 505 SQ.FT.

BALCONY - 210 SQ.FT.

**TOTAL LIVING AREA - 715 SQ.FT.**



FLOORS 2-4



LAKE ONTARIO

**WATERSCAPES**  
THE CONDOMINIUM

[WWW.MONARCHGROUP.NET](http://WWW.MONARCHGROUP.NET)

**Monarch**

Sizes and specifications are subject to change without notice. E.&O.E. Actual usable floor space may vary from any stated floor area. Floor measurements, if any, were calculated on the middle floor of typical floor plates, such that units on lower floors may have less floor space due to thicker structural members, mechanical rooms, etc. while units on higher floors may have more floor space. Illustration is artist's impression.



# AQUA

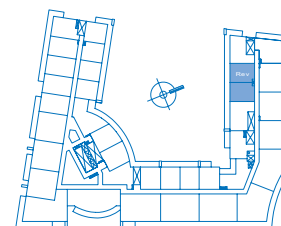
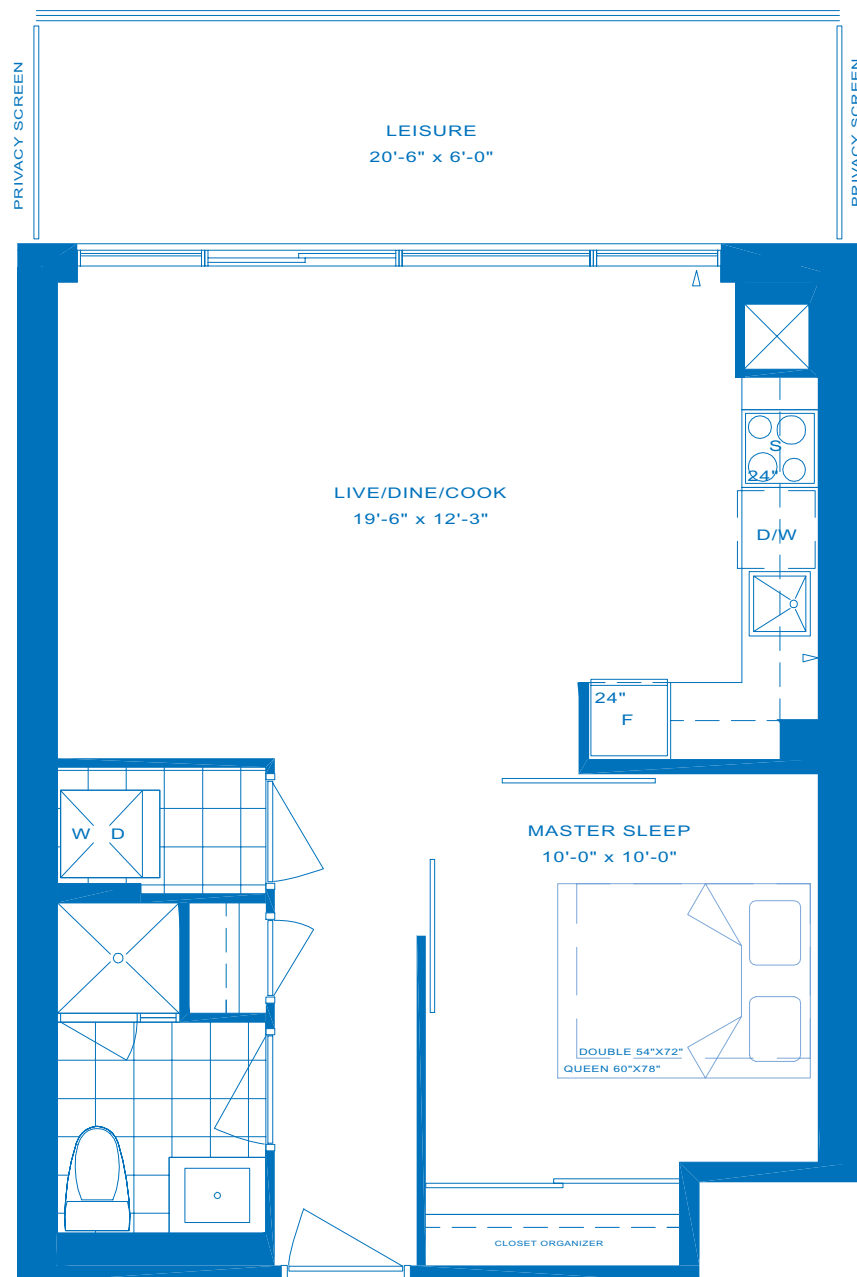
ONE BEDROOM

INTERIOR - 540 SQ.FT.

BALCONY - 110 SQ.FT.

**TOTAL LIVING AREA - 650 SQ.FT.**

# C540



## FLOORS GROUND-4

*Terrace on ground floor  
Ask a sales representative for details*



**WATERSCAPES**  
THE CONDOMINIUM

[WWW.MONARCHGROUP.NET](http://WWW.MONARCHGROUP.NET)

**Monarch**

Sizes and specifications are subject to change without notice. E.&O.E. Actual usable floor space may vary from any stated floor area. Floor measurements, if any, were calculated on the middle floor of typical floor plates, such that units on lower floors may have less floor space due to thicker structural members, mechanical rooms, etc. while units on higher floors may have more floor space. Illustration is artist's impression.

AQUA

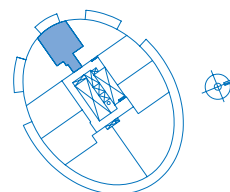
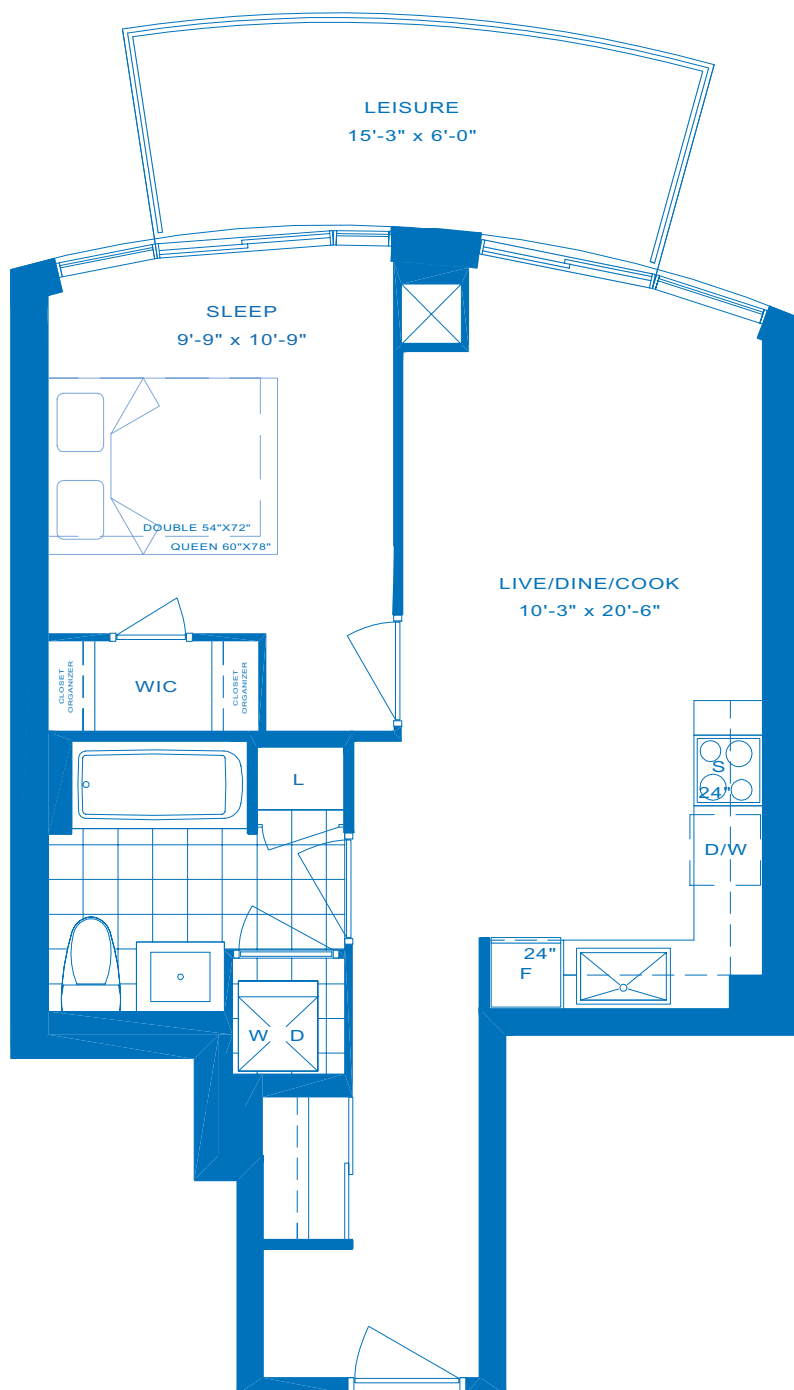
ONE BEDROOM

T549

INTERIOR - 549 SQ.FT.

BALCONY - 85 SQ.FT.

TOTAL LIVING AREA - 634 SQ.FT.

**FLOORS 5-29**

540 sq. ft. terrace on 5th floor  
Balcony sizes vary on select floors.  
Ask a sales representative for details



  
**WATERSCAPES**  
THE CONDOMINIUM

[WWW.MONARCHGROUP.NET](http://WWW.MONARCHGROUP.NET)

  
**Monarch**

Sizes and specifications are subject to change without notice. E.&O.E. Actual usable floor space may vary from any stated floor area. Floor measurements, if any, were calculated on the middle floor of typical floor plates, such that units on lower floors may have less floor space due to thicker structural members, mechanical rooms, etc. while units on higher floors may have more floor space. Illustration is artist's impression.

# AQUA

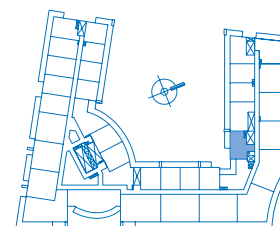
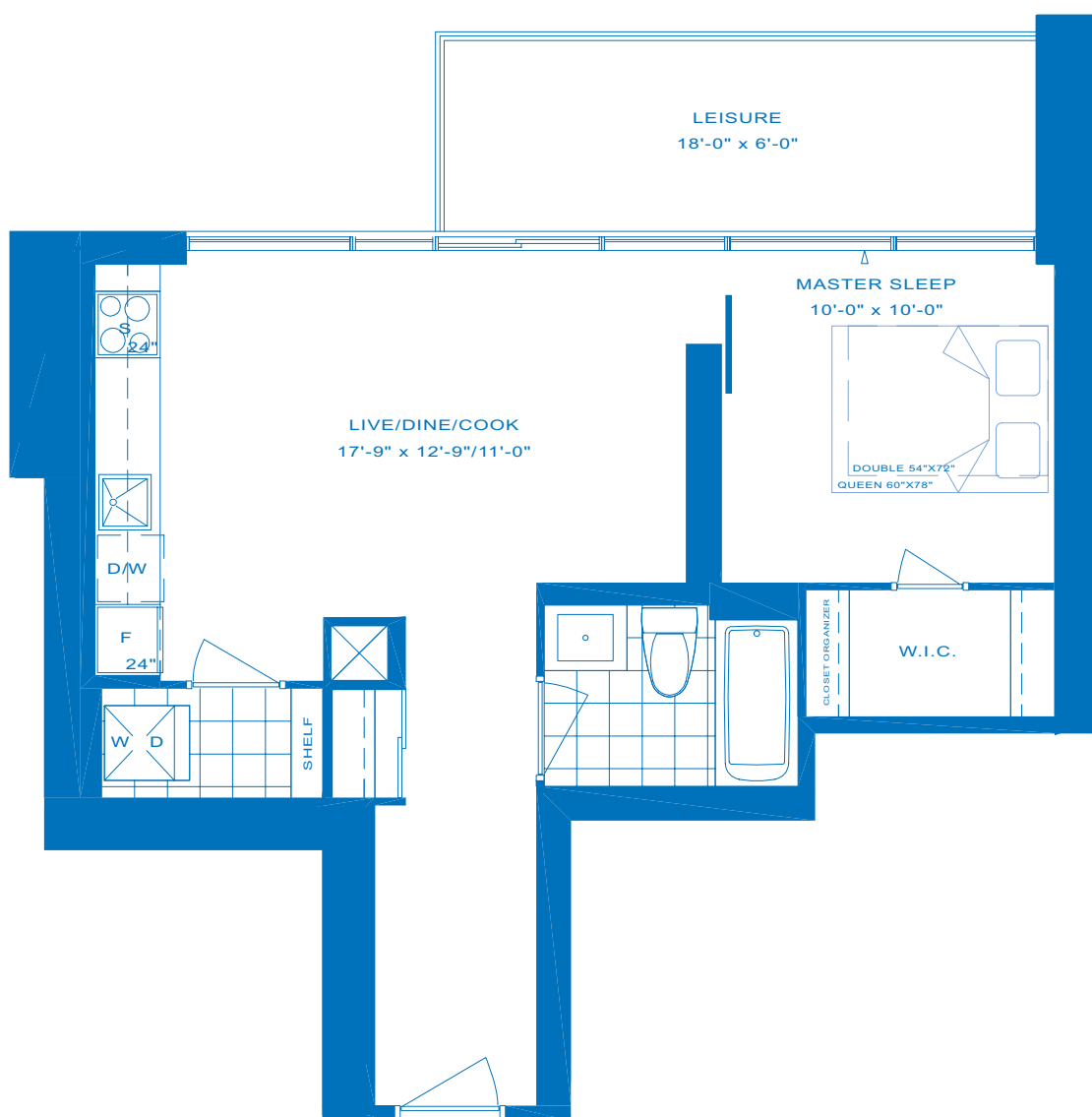
ONE BEDROOM

INTERIOR - 596 SQ.FT.

BALCONY - 150 SQ.FT.

**TOTAL LIVING AREA - 746 SQ.FT.**

# C596



## FLOORS GROUND-4

*Terrace on Ground Floor  
Ask a sales representative for details*



**WATERSCAPES**  
THE CONDOMINIUM

[WWW.MONARCHGROUP.NET](http://WWW.MONARCHGROUP.NET)

**Monarch**

Sizes and specifications are subject to change without notice. E.&O.E. Actual usable floor space may vary from any stated floor area. Floor measurements, if any, were calculated on the middle floor of typical floor plates, such that units on lower floors may have less floor space due to thicker structural members, mechanical rooms, etc. while units on higher floors may have more floor space. Illustration is artist's impression.

# AQUA

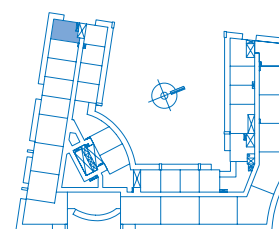
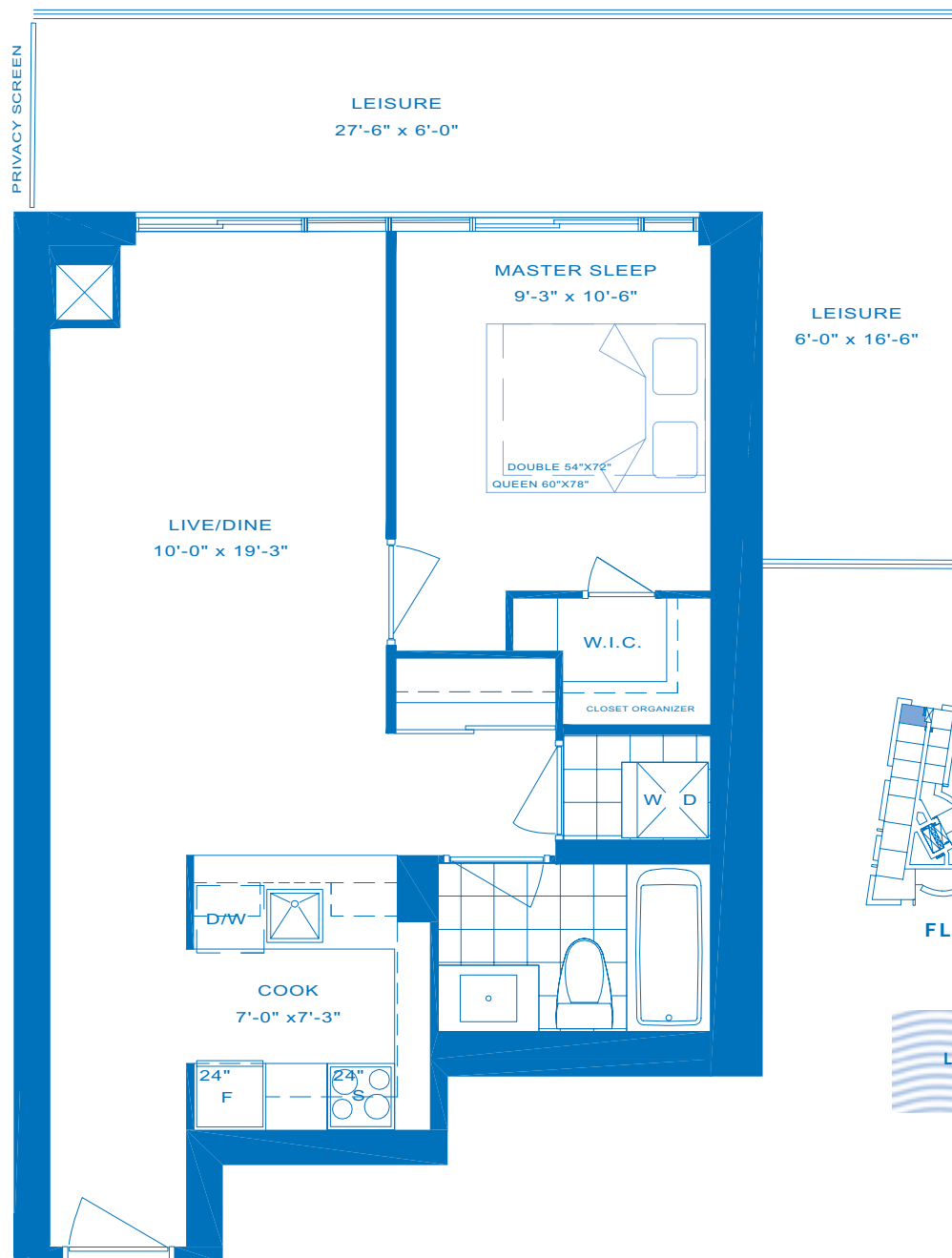
ONE BEDROOM

# P605

INTERIOR - 605 SQ.FT.

BALCONY - 210 SQ.FT.

**TOTAL LIVING AREA - 815 SQ.FT.**



FLOORS 2-4



**WATERSCAPES**  
THE CONDOMINIUM

[WWW.MONARCHGROUP.NET](http://WWW.MONARCHGROUP.NET)

**Monarch**

Sizes and specifications are subject to change without notice. E.&O.E. Actual usable floor space may vary from any stated floor area. Floor measurements, if any, were calculated on the middle floor of typical floor plates, such that units on lower floors may have less floor space due to thicker structural members, mechanical rooms, etc. while units on higher floors may have more floor space. Illustration is artist's impression.

# AQUA

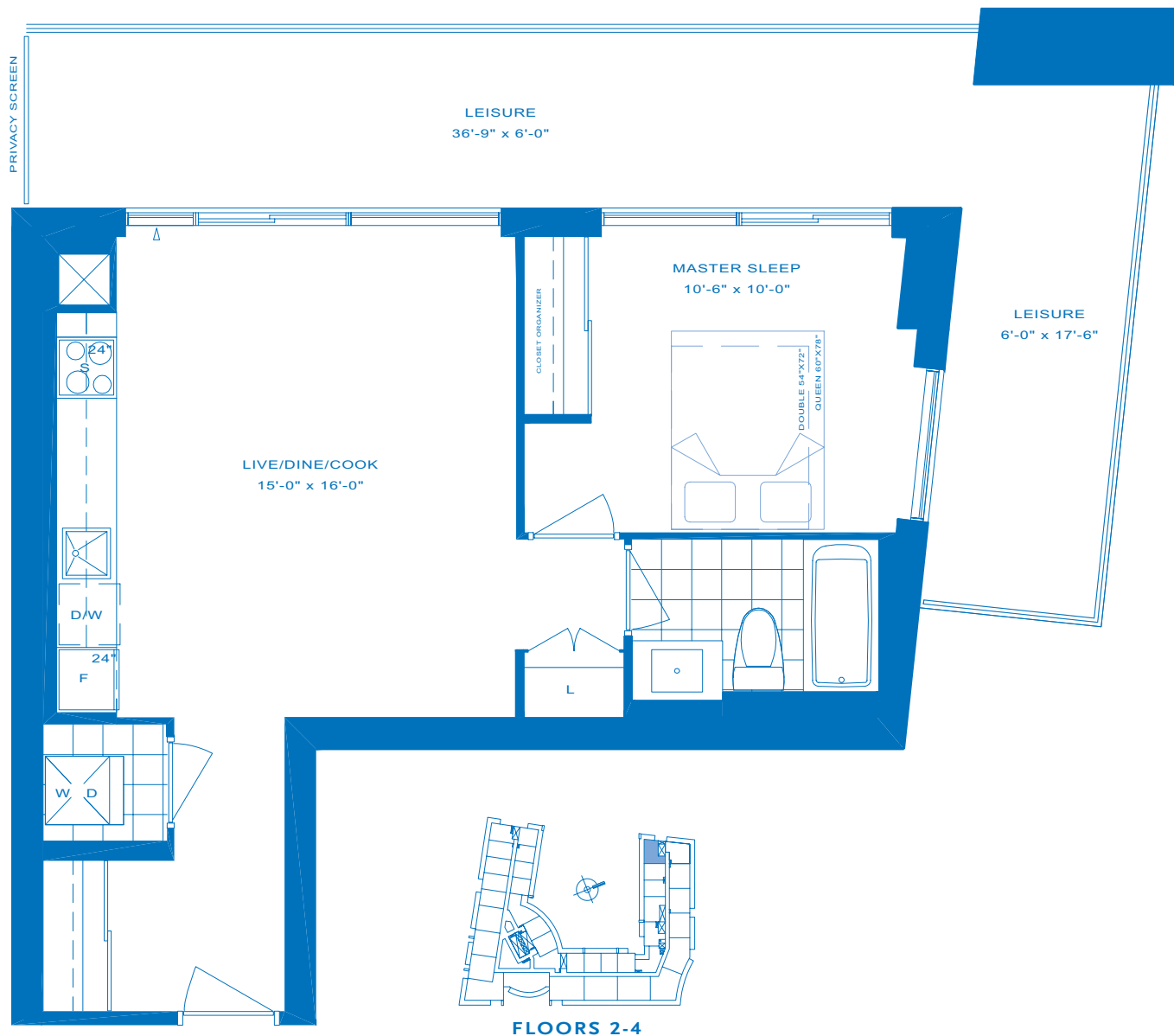
ONE BEDROOM

INTERIOR - 611 SQ.FT.

BALCONY - 270 SQ.FT.

**TOTAL LIVING AREA - 881 SQ.FT.**

# C611



**WATERSCAPES**  
THE CONDOMINIUM

[WWW.MONARCHGROUP.NET](http://WWW.MONARCHGROUP.NET)

**Monarch**

Sizes and specifications are subject to change without notice. E.&O.E. Actual usable floor space may vary from any stated floor area. Floor measurements, if any, were calculated on the middle floor of typical floor plates, such that units on lower floors may have less floor space due to thicker structural members, mechanical rooms, etc. while units on higher floors may have more floor space. Illustration is artist's impression.

# AQUA

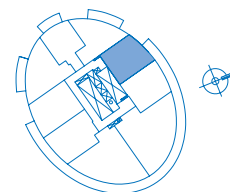
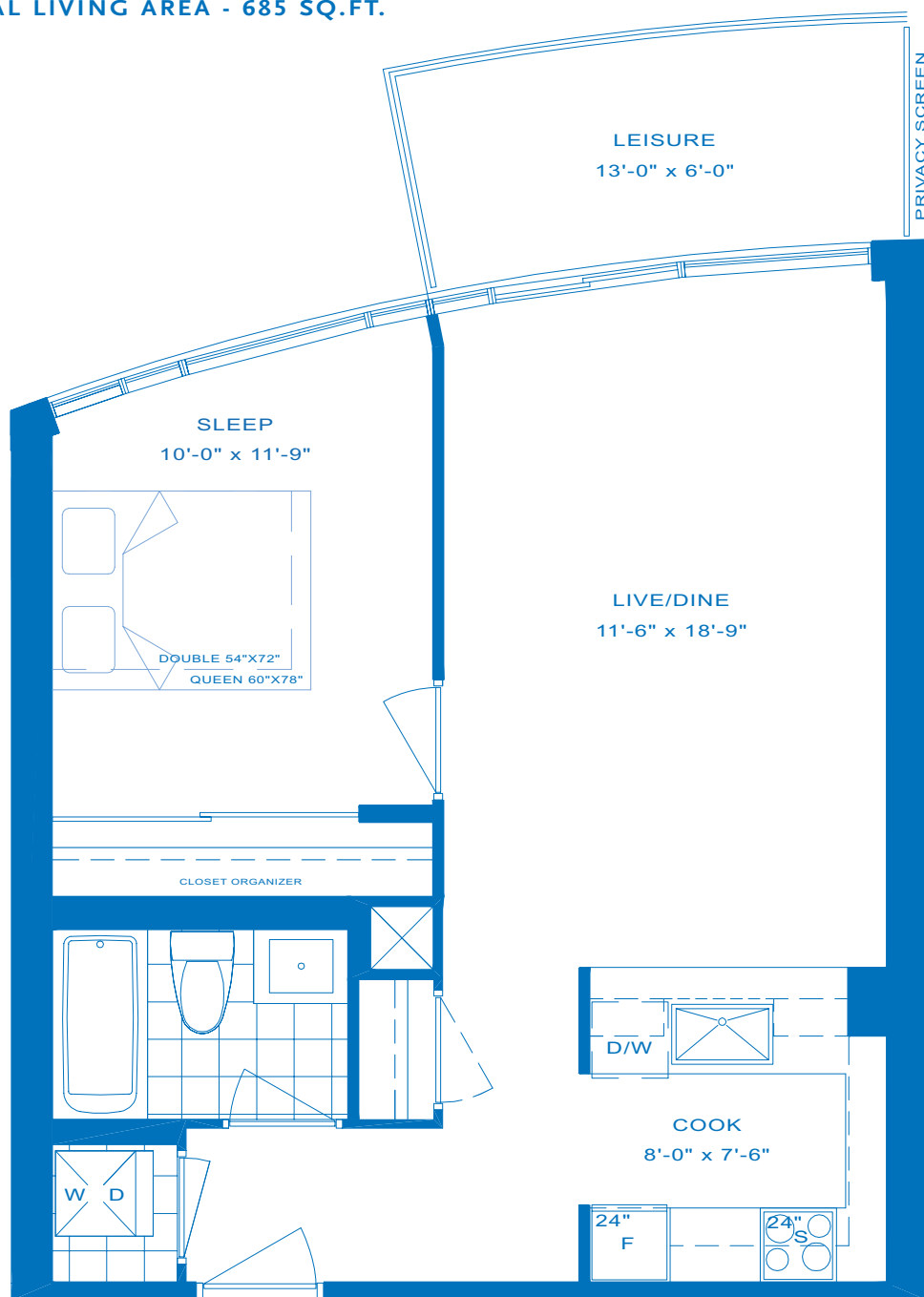
ONE BEDROOM

INTERIOR - 615 SQ.FT.

BALCONY - 70 SQ.FT.

**TOTAL LIVING AREA - 685 SQ.FT.**

# T615



## FLOORS 2-25

Balcony sizes vary on select floors.  
Ask a sales representative for details



**WATERSCAPES**  
THE CONDOMINIUM

[WWW.MONARCHGROUP.NET](http://WWW.MONARCHGROUP.NET)

**Monarch**

Sizes and specifications are subject to change without notice. E.&O.E. Actual usable floor space may vary from any stated floor area. Floor measurements, if any, were calculated on the middle floor of typical floor plates, such that units on lower floors may have less floor space due to thicker structural members, mechanical rooms, etc. while units on higher floors may have more floor space. Illustration is artist's impression.

# AQUA

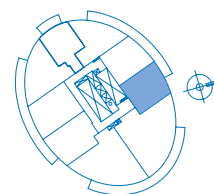
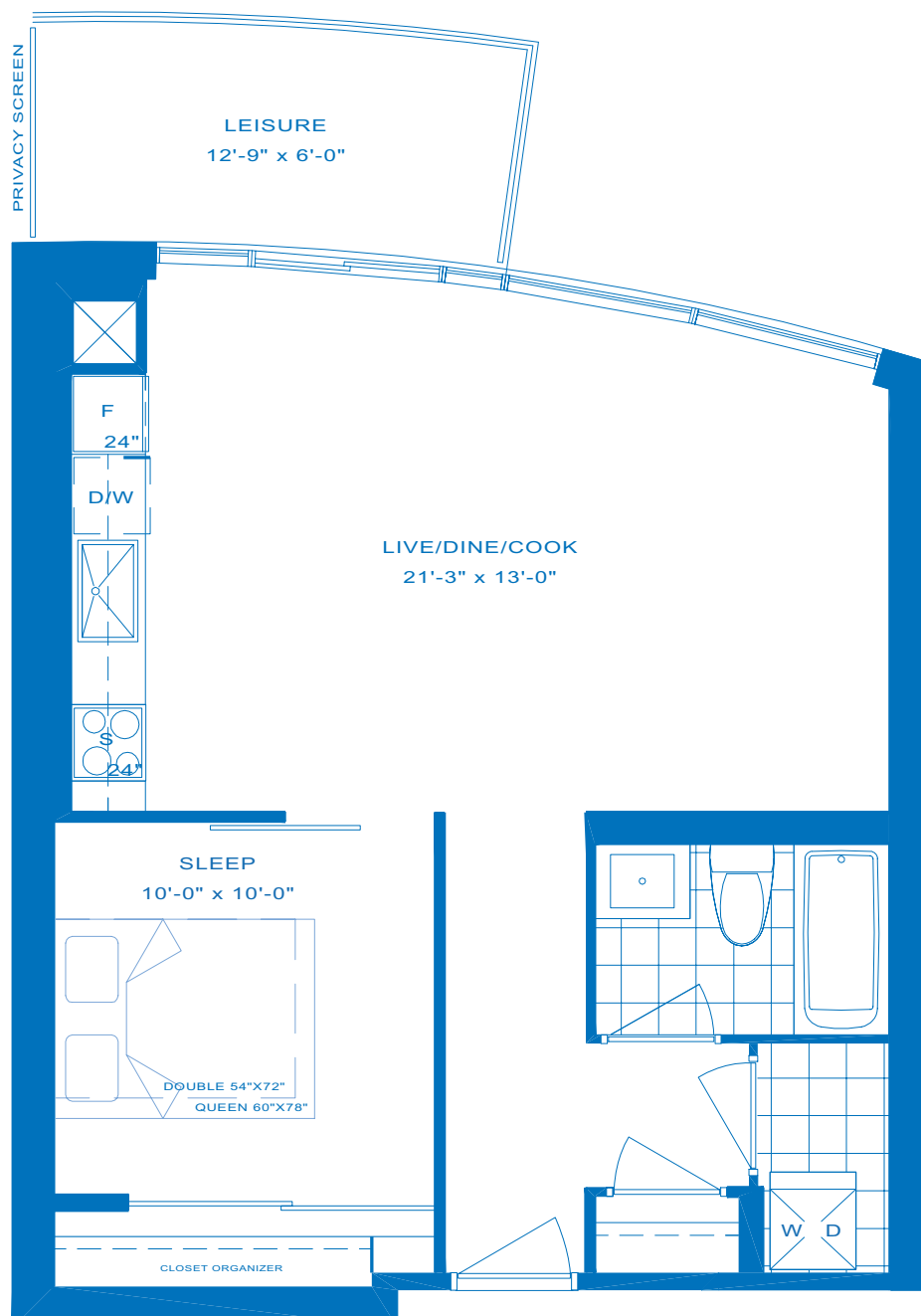
ONE BEDROOM

INTERIOR - 620 SQ.FT.

BALCONY - 70 SQ.FT.

**TOTAL LIVING AREA - 690 SQ.FT.**

# T620



## FLOORS 2-25

Balcony sizes vary on select floors.  
Ask a sales representative for details



**WATERSCAPES**  
THE CONDOMINIUM

[WWW.MONARCHGROUP.NET](http://WWW.MONARCHGROUP.NET)

**Monarch**

Sizes and specifications are subject to change without notice. E.&O.E. Actual usable floor space may vary from any stated floor area. Floor measurements, if any, were calculated on the middle floor of typical floor plates, such that units on lower floors may have less floor space due to thicker structural members, mechanical rooms, etc. while units on higher floors may have more floor space. Illustration is artist's impression.

# AQUA

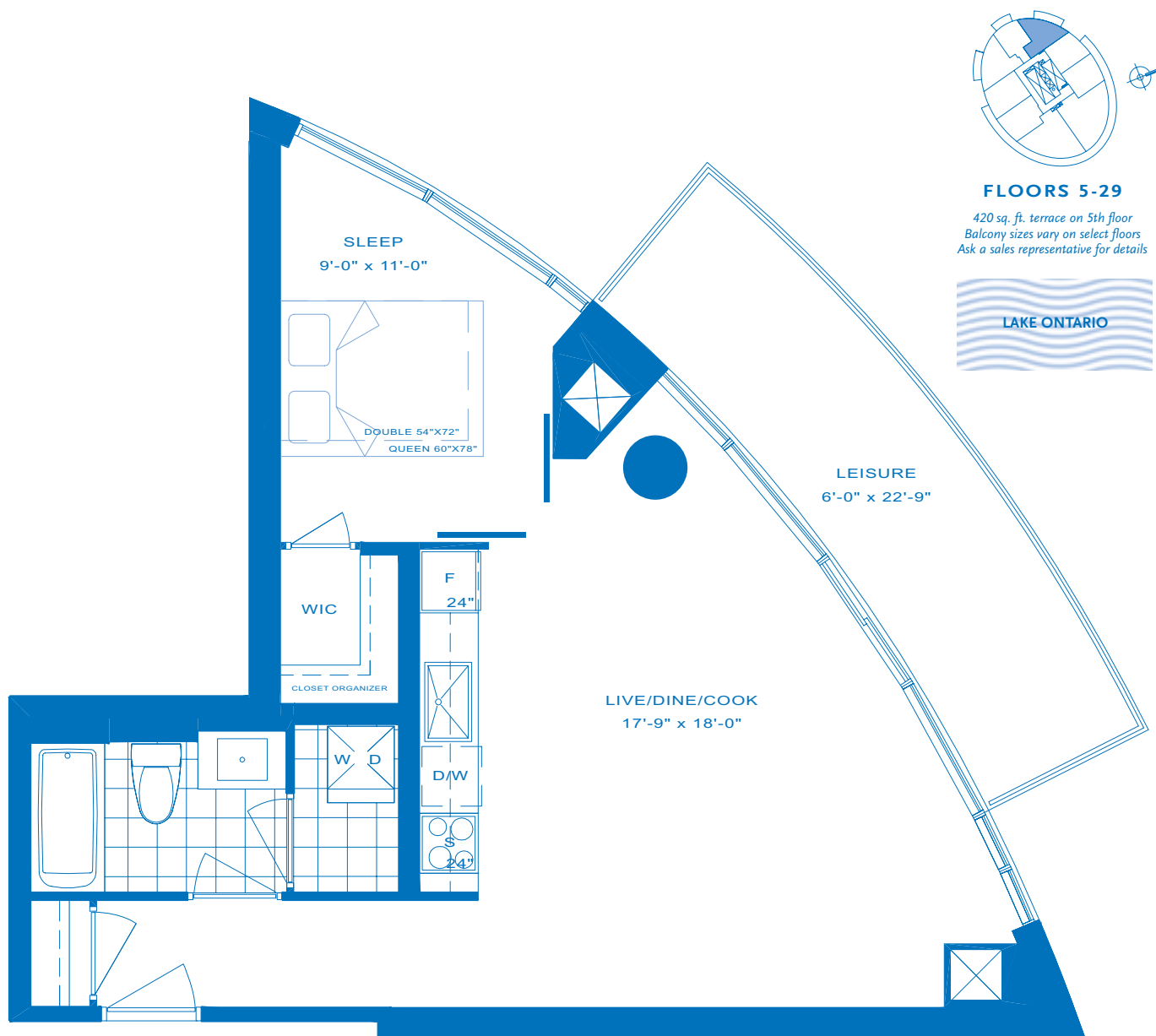
ONE BEDROOM

INTERIOR - 625 SQ.FT.

BALCONY - 130 SQ.FT.

TOTAL LIVING AREA - 755 SQ.FT.

# T625



  
**WATERSCAPES**  
THE CONDOMINIUM

[WWW.MONARCHGROUP.NET](http://WWW.MONARCHGROUP.NET)

  
**Monarch**

Sizes and specifications are subject to change without notice. E.&O.E. Actual usable floor space may vary from any stated floor area. Floor measurements, if any, were calculated on the middle floor of typical floor plates, such that units on lower floors may have less floor space due to thicker structural members, mechanical rooms, etc. while units on higher floors may have more floor space. Illustration is artist's impression.



# WAVE

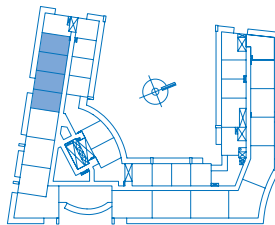
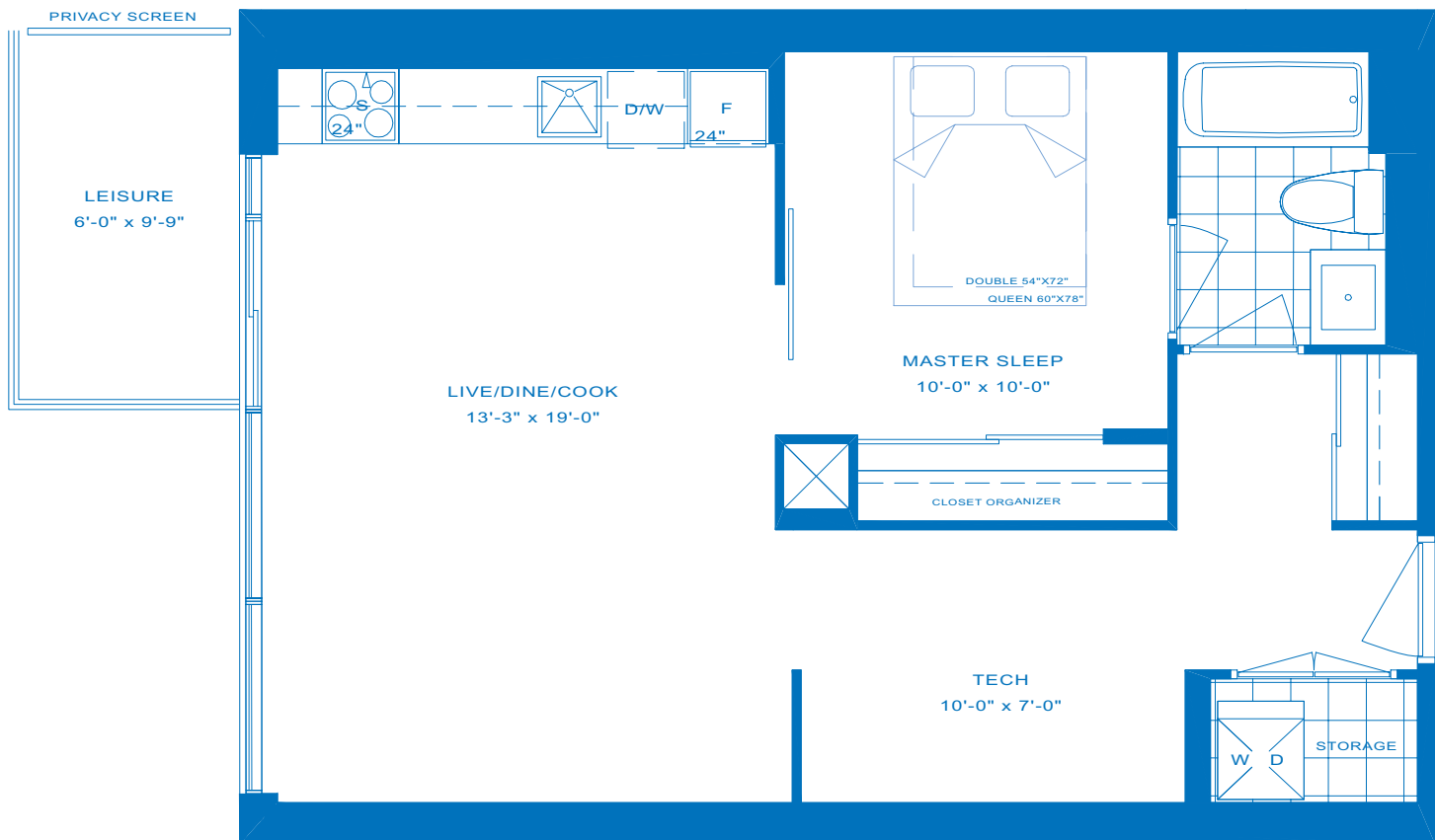
ONE BEDROOM + TECH

# P645

INTERIOR - 645 SQ.FT.

BALCONY - 40 SQ.FT.

**TOTAL LIVING AREA - 685 SQ.FT.**



**FLOORS 2-4**

*Balcony sizes vary on select floors.  
Ask a sales representative for details*



**WATERSCAPES**  
THE CONDOMINIUM

[WWW.MONARCHGROUP.NET](http://WWW.MONARCHGROUP.NET)

**Monarch**

Sizes and specifications are subject to change without notice. E.&O.E. Actual usable floor space may vary from any stated floor area. Floor measurements, if any, were calculated on the middle floor of typical floor plates, such that units on lower floors may have less floor space due to thicker structural members, mechanical rooms, etc. while units on higher floors may have more floor space. Illustration is artist's impression.

# WAVE

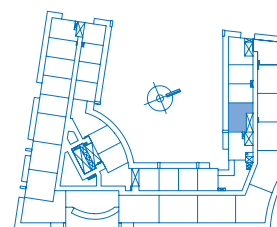
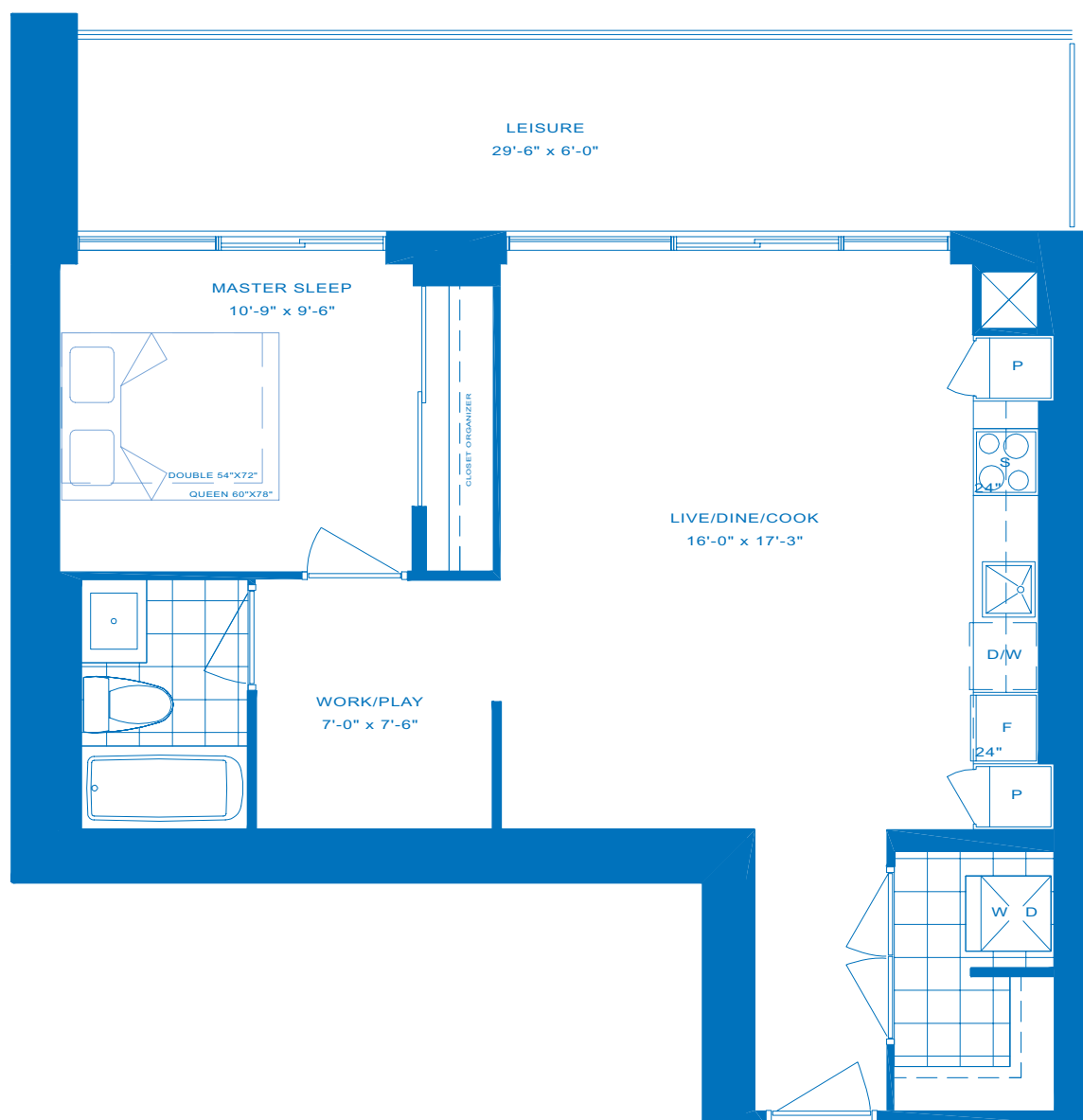
ONE BEDROOM + DEN

INTERIOR - 680 SQ.FT.

BALCONY - 165 SQ.FT.

TOTAL LIVING AREA - 845 SQ.FT.

# C680



## FLOORS GROUND-4

Terrace on ground floor.  
Ask a sales representative for details



  
**WATERSCAPES**  
THE CONDOMINIUM

[WWW.MONARCHGROUP.NET](http://WWW.MONARCHGROUP.NET)

  
**Monarch**

Sizes and specifications are subject to change without notice. E.&O.E. Actual usable floor space may vary from any stated floor area. Floor measurements, if any, were calculated on the middle floor of typical floor plates, such that units on lower floors may have less floor space due to thicker structural members, mechanical rooms, etc. while units on higher floors may have more floor space. Illustration is artist's impression.

# WAVE

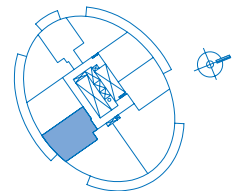
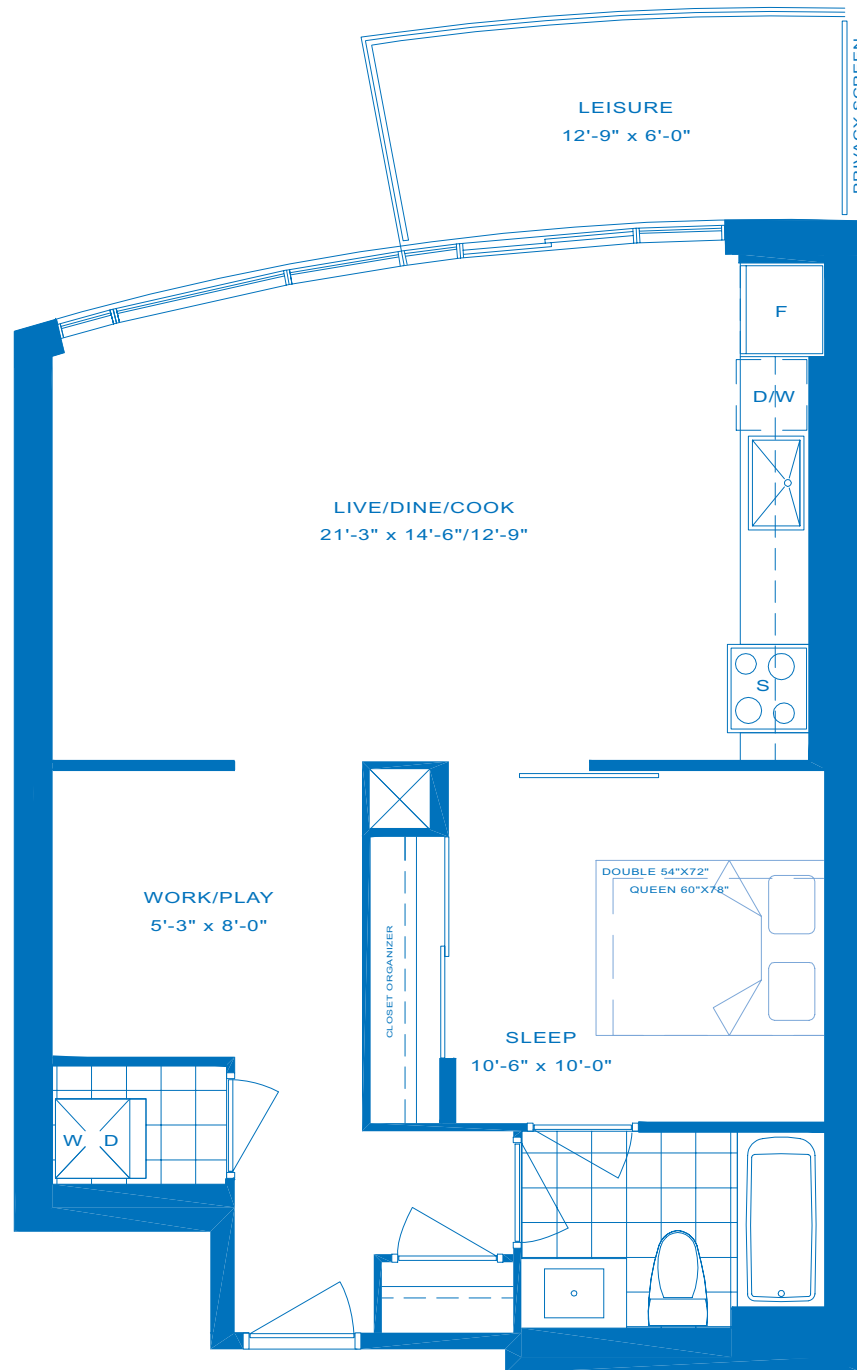
ONE BEDROOM + DEN

# T700

INTERIOR - 700 SQ.FT.

BALCONY - 70 SQ.FT.

TOTAL LIVING AREA - 770 SQ.FT.



## FLOORS 5-25

1090 sq. ft. terrace on 5th floor  
Balcony sizes vary on select floors.  
Ask a sales representative for details



**WATERSCAPES**  
THE CONDOMINIUM

[WWW.MONARCHGROUP.NET](http://WWW.MONARCHGROUP.NET)

**Monarch**

Sizes and specifications are subject to change without notice. E.&O.E. Actual usable floor space may vary from any stated floor area. Floor measurements, if any, were calculated on the middle floor of typical floor plates, such that units on lower floors may have less floor space due to thicker structural members, mechanical rooms, etc. while units on higher floors may have more floor space. Illustration is artist's impression.

# WAVE

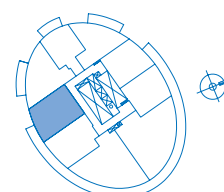
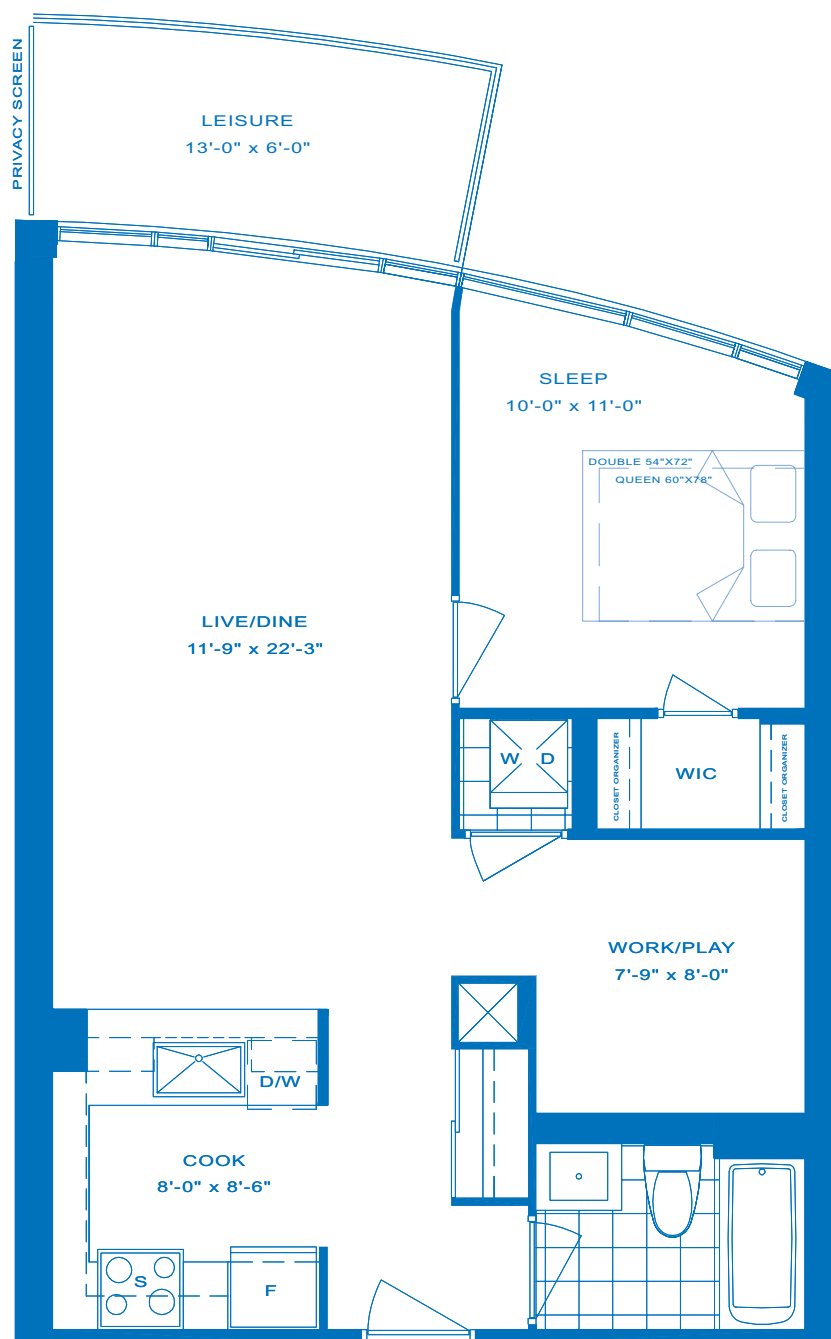
ONE BEDROOM + DEN

INTERIOR - 715 SQ.FT.

BALCONY - 70 SQ.FT.

TOTAL LIVING AREA - 785 SQ.FT.

# T715



## FLOORS 5-25

440 sq. ft. terrace on 5th floor  
Balcony sizes vary on select floors.  
Ask a sales representative for details



LAKE ONTARIO

  
**WATERSCAPES**  
THE CONDOMINIUM

[WWW.MONARCHGROUP.NET](http://WWW.MONARCHGROUP.NET)

  
**Monarch**

Sizes and specifications are subject to change without notice. E.&O.E. Actual usable floor space may vary from any stated floor area. Floor measurements, if any, were calculated on the middle floor of typical floor plates, such that units on lower floors may have less floor space due to thicker structural members, mechanical rooms, etc. while units on higher floors may have more floor space. Illustration is artist's impression.

# WAVE

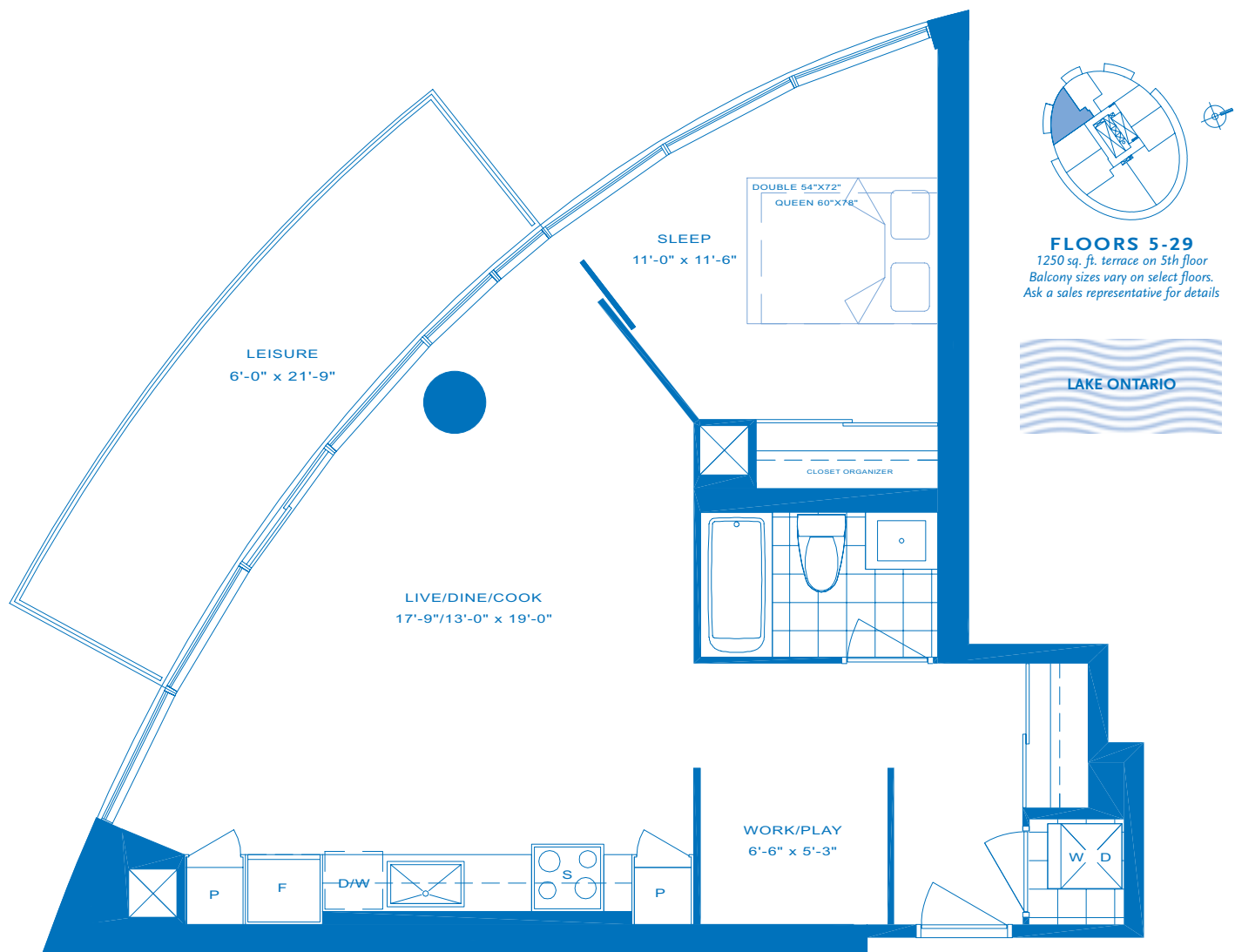
ONE BEDROOM + DEN

INTERIOR - 726 SQ.FT.

BALCONY - 125 SQ.FT.

TOTAL LIVING AREA - 851 SQ.FT.

# T726



  
**WATERSCAPES**  
THE CONDOMINIUM

[WWW.MONARCHGROUP.NET](http://WWW.MONARCHGROUP.NET)

  
**Monarch**

Sizes and specifications are subject to change without notice. E.&O.E. Actual usable floor space may vary from any stated floor area. Floor measurements, if any, were calculated on the middle floor of typical floor plates, such that units on lower floors may have less floor space due to thicker structural members, mechanical rooms, etc. while units on higher floors may have more floor space. Illustration is artist's impression.

# SPLASH

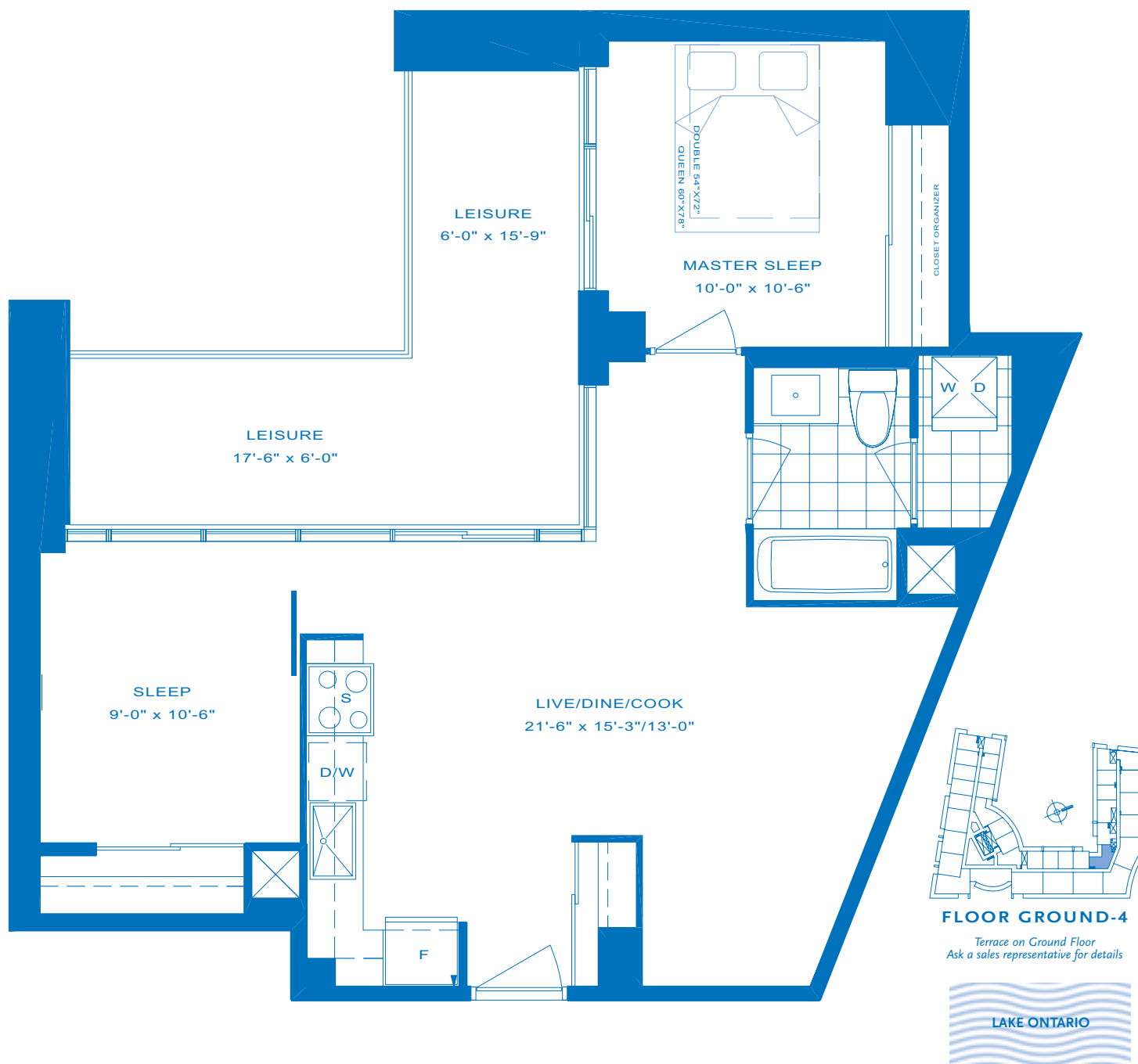
TWO BEDROOM

# C731

INTERIOR - 731 SQ.FT.

BALCONY - 150 SQ.FT.

TOTAL LIVING AREA - 881 SQ.FT.



**WATERSCAPES**  
THE CONDOMINIUM

[WWW.MONARCHGROUP.NET](http://WWW.MONARCHGROUP.NET)

**Monarch**

Sizes and specifications are subject to change without notice. E.&O.E. Actual usable floor space may vary from any stated floor area. Floor measurements, if any, were calculated on the middle floor of typical floor plates, such that units on lower floors may have less floor space due to thicker structural members, mechanical rooms, etc. while units on higher floors may have more floor space. Illustration is artist's impression.

# SPLASH

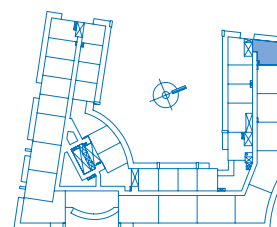
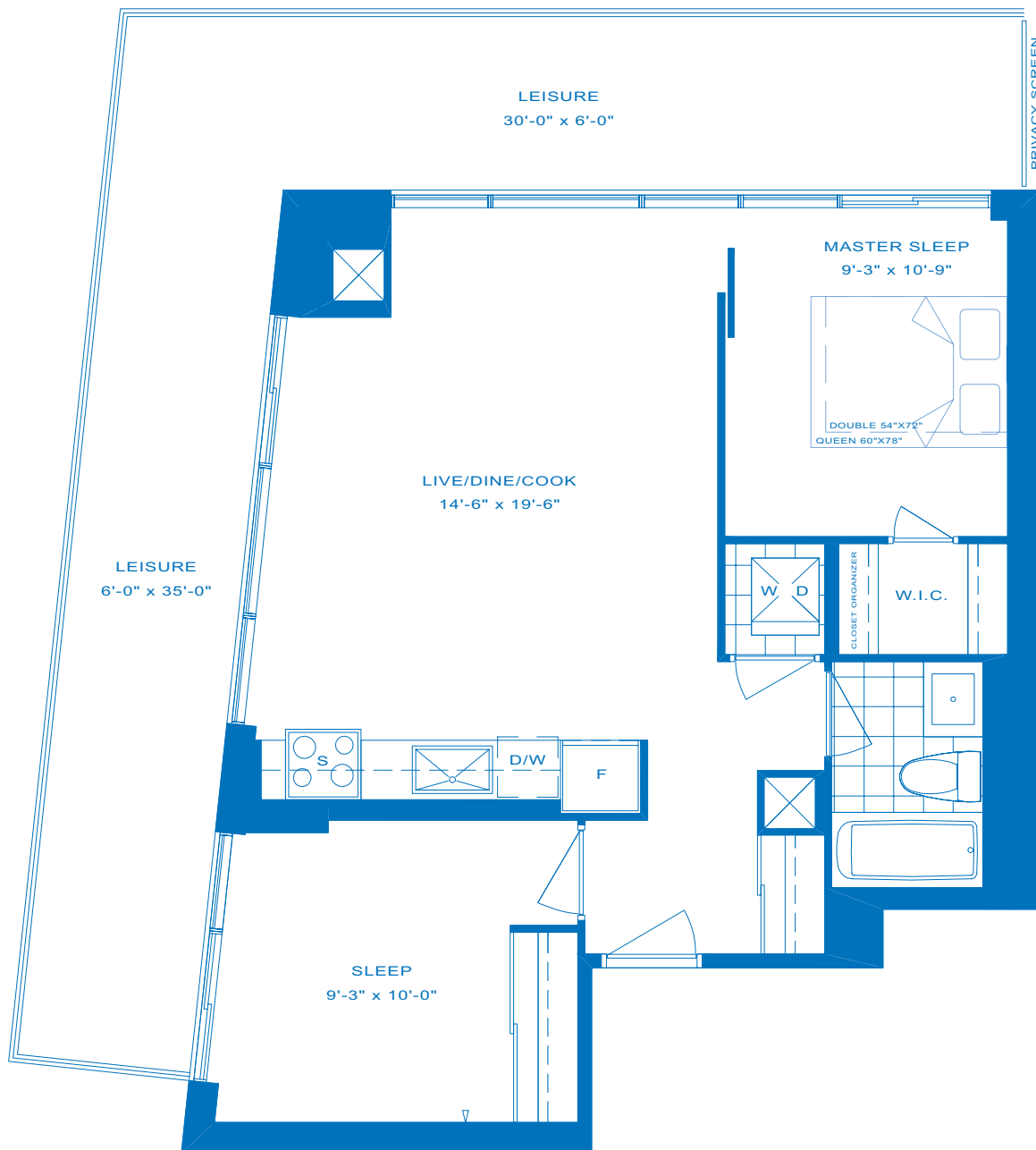
TWO BEDROOM

# P738

INTERIOR - 738 SQ.FT.

BALCONY - 330 SQ.FT.

**TOTAL LIVING AREA - 1068 SQ.FT.**



FLOORS 2-4



LAKE ONTARIO

**WATERSCAPES**  
THE CONDOMINIUM

[WWW.MONARCHGROUP.NET](http://WWW.MONARCHGROUP.NET)

**Monarch**

Sizes and specifications are subject to change without notice. E.&O.E. Actual usable floor space may vary from any stated floor area. Floor measurements, if any, were calculated on the middle floor of typical floor plates, such that units on lower floors may have less floor space due to thicker structural members, mechanical rooms, etc. while units on higher floors may have more floor space. Illustration is artist's impression.

# SPLASH

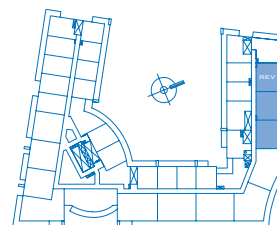
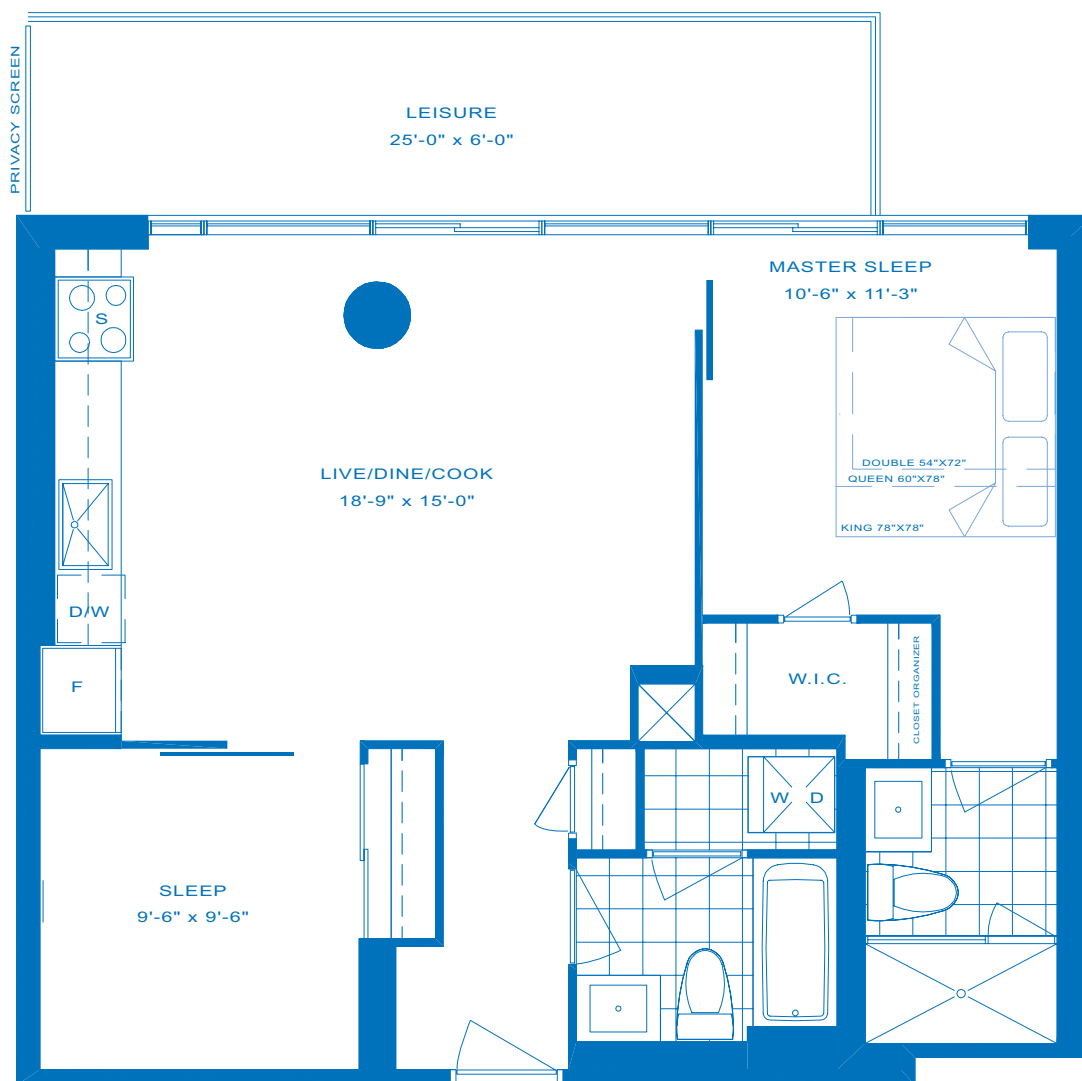
TWO BEDROOM

# P794

INTERIOR - 794 SQ.FT.

BALCONY - 135 SQ.FT.

**TOTAL LIVING AREA - 929 SQ.FT.**



## FLOORS 2-4

Balcony sizes vary on select floors.  
Ask a sales representative for details

LAKE ONTARIO

**WATERSCAPES**  
THE CONDOMINIUM

[WWW.MONARCHGROUP.NET](http://WWW.MONARCHGROUP.NET)

**Monarch**

Sizes and specifications are subject to change without notice. E.&O.E. Actual usable floor space may vary from any stated floor area. Floor measurements, if any, were calculated on the middle floor of typical floor plates, such that units on lower floors may have less floor space due to thicker structural members, mechanical rooms, etc. while units on higher floors may have more floor space. Illustration is artist's impression.



# SPLASH

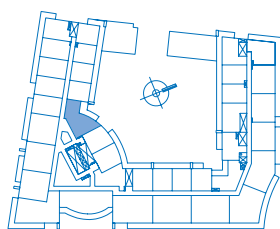
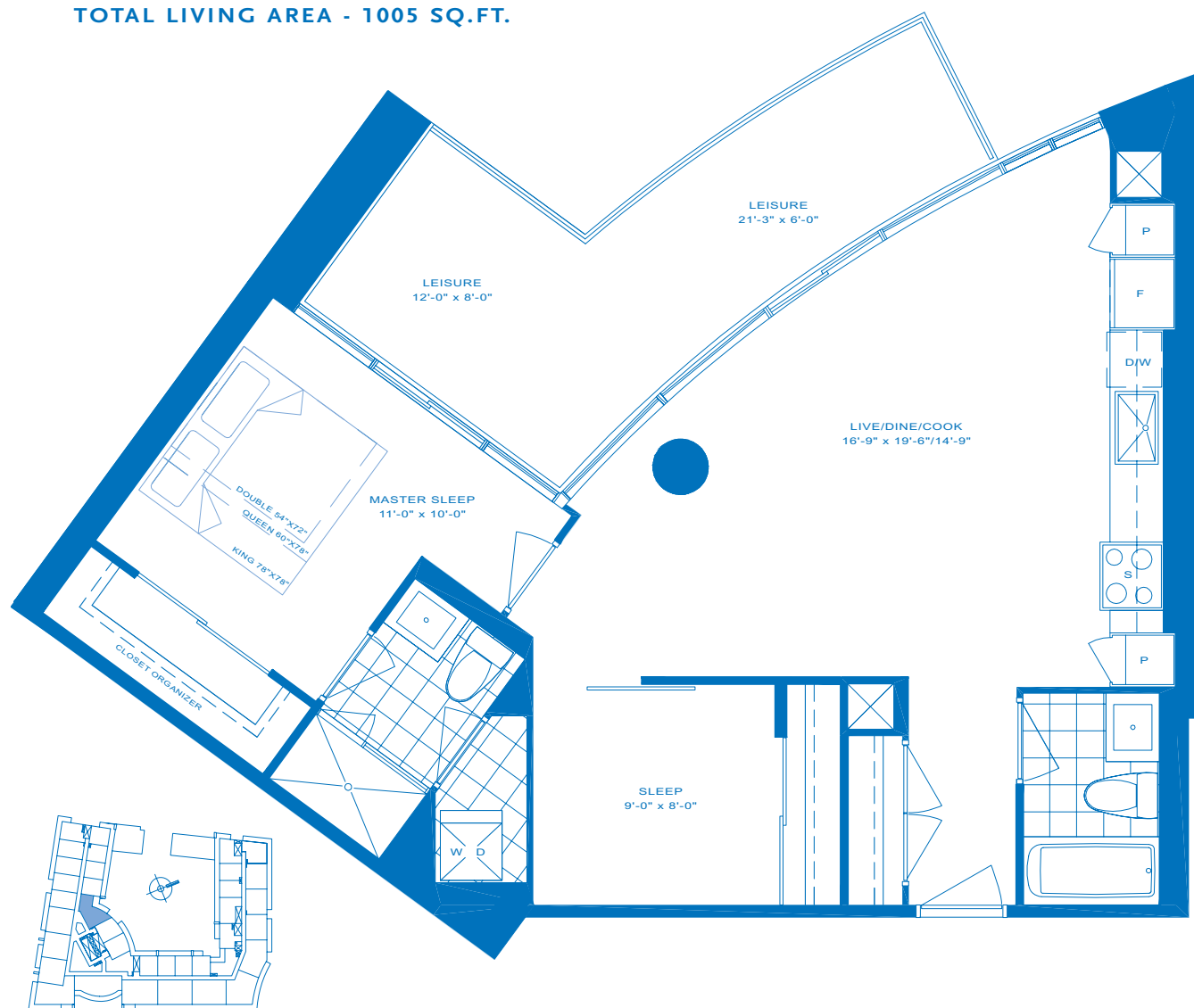
TWO BEDROOM

# C840

INTERIOR - 840 SQ.FT.

BALCONY - 165 SQ.FT.

**TOTAL LIVING AREA - 1005 SQ.FT.**



**FLOORS 2-4**

*Balcony sizes vary on select floors  
Ask a sales representative for details*



**WATERSCAPES**  
THE CONDOMINIUM

[WWW.MONARCHGROUP.NET](http://WWW.MONARCHGROUP.NET)

**Monarch**

Sizes and specifications are subject to change without notice. E.&O.E. Actual usable floor space may vary from any stated floor area. Floor measurements, if any, were calculated on the middle floor of typical floor plates, such that units on lower floors may have less floor space due to thicker structural members, mechanical rooms, etc. while units on higher floors may have more floor space. Illustration is artist's impression.

# WATERLOFT

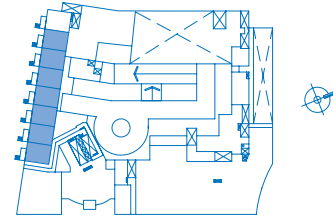
2-STOREY  
ONE BEDROOM + DEN LOFT

INTERIOR - 845 SQ.FT.

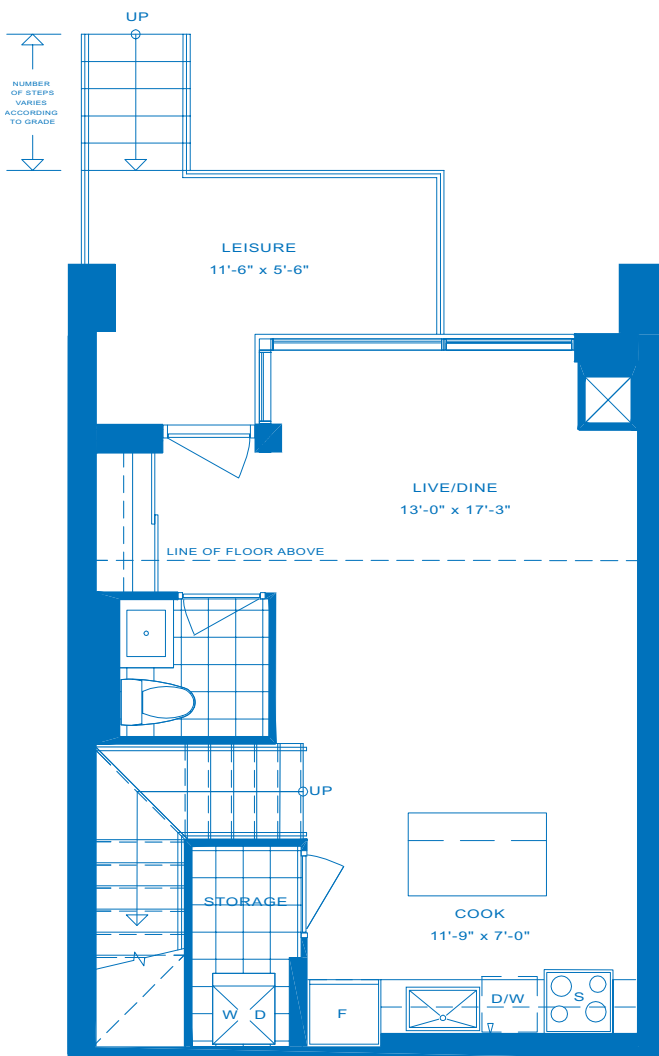
PORCH - 55 SQ.FT.

**TOTAL LIVING AREA - 900 SQ.FT.**

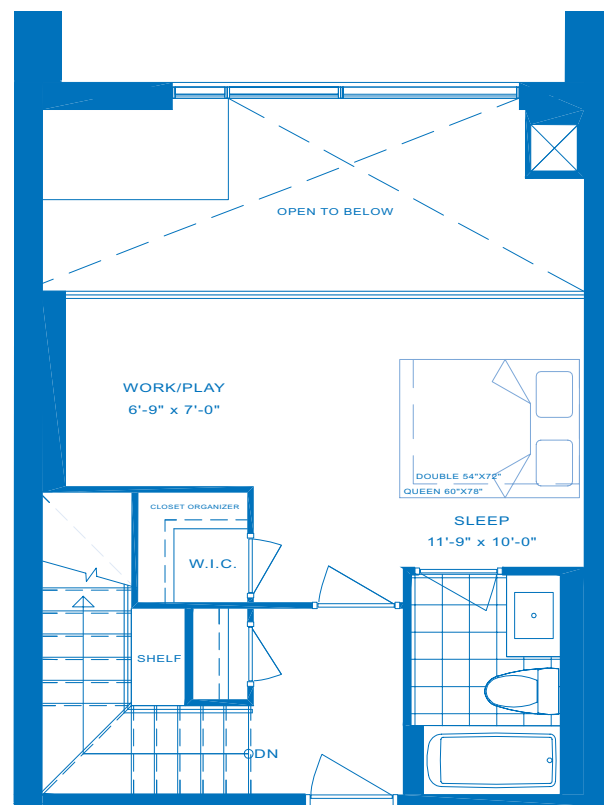
# P845



FLOORS P1-GROUND



MAIN LEVEL



UPPER LEVEL

  
**WATERSCAPES**  
THE CONDOMINIUM

[WWW.MONARCHGROUP.NET](http://WWW.MONARCHGROUP.NET)

  
**Monarch**

Sizes and specifications are subject to change without notice. E.&O.E. Actual usable floor space may vary from any stated floor area. Floor measurements, if any, were calculated on the middle floor of typical floor plates, such that units on lower floors may have less floor space due to thicker structural members, mechanical rooms, etc. while units on higher floors may have more floor space. Illustration is artist's impression.

# P860

1st FLOOR

LEISURE  
9'-0" x 6'-0"

LEISURE  
13'-0" x 6'-0"

DOUBLE 54"x72"  
QUEEN 60"x78"  
KING 78"x78"

MASTER SLEEP  
10'-9" x 11'-6"

LIVE/DINE/COOK  
18'-9" x 14'-9"

SLEEP  
9'-0" x 10'-0"

W.I.C.  
CLOSET ORGANIZER

W D

PRIVACY SCREEN

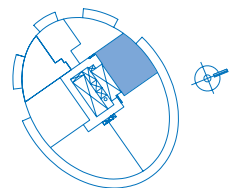
P  
F  
D/W  
S



Sizes and specifications are subject to change without notice. E.&O.E. Actual usable floor space may vary from any stated floor area. Floor measurements, if any, were calculated on the middle floor of typical floor plates, such that units on lower floors may have less floor space due to thicker structural members, mechanical rooms, etc. while units on higher floors may have more floor space. Illustration is artist's impression.

# T940

**TOTAL LIVING AREA - 1085 SQ.FT.**



## FLOORS 26-29

Balcony sizes vary on select floors.  
Ask a sales representative for details

LAKE ONTARIO



**WATERSCAPES**  
THE CONDOMINIUM

[WWW.MONARCHGROUP.NET](http://WWW.MONARCHGROUP.NET)



Sizes and specifications are subject to change without notice. E.&O.E. Actual usable floor space may vary from any stated floor area. Floor measurements, if any, were calculated on the middle floor of typical floor plates, such that units on lower floors may have less floor space due to thicker structural members, mechanical rooms, etc. while units on higher floors may have more floor space. Illustration is artist's impression.

# SPLASH

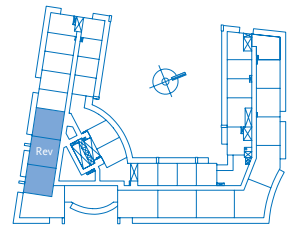
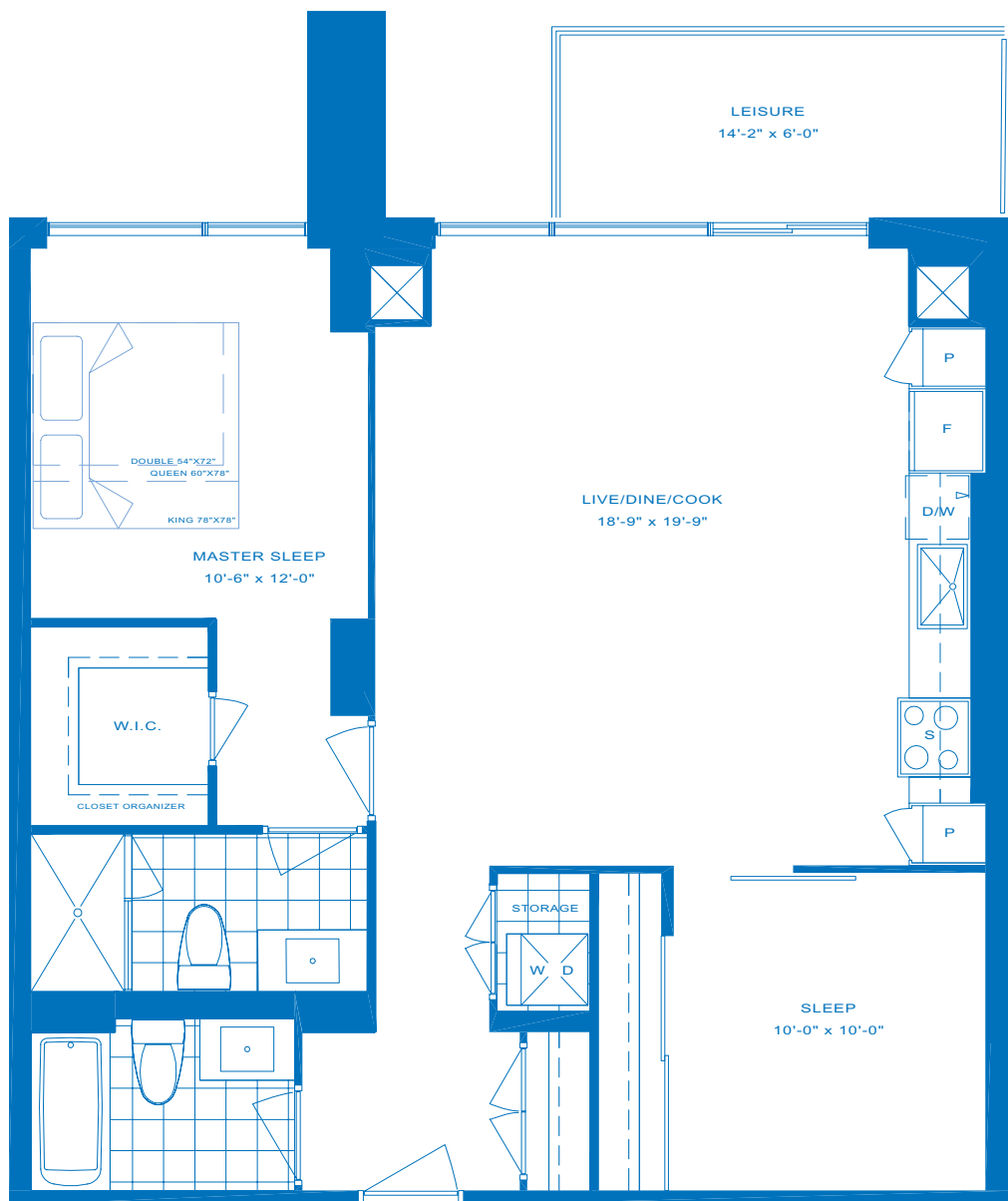
TWO BEDROOM

INTERIOR - 965 SQ.FT.

BALCONY - 70 SQ.FT.

**TOTAL LIVING AREA - 1035 SQ.FT.**

# P965



## FLOORS 2-4

Balcony sizes vary on select floors.  
Ask a sales representative for details



**WATERSCAPES**  
THE CONDOMINIUM

[WWW.MONARCHGROUP.NET](http://WWW.MONARCHGROUP.NET)

**Monarch**

Sizes and specifications are subject to change without notice. E.&O.E. Actual usable floor space may vary from any stated floor area. Floor measurements, if any, were calculated on the middle floor of typical floor plates, such that units on lower floors may have less floor space due to thicker structural members, mechanical rooms, etc. while units on higher floors may have more floor space. Illustration is artist's impression.

# WATERLOFT

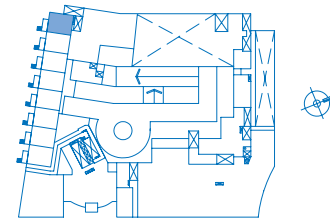
2-STOREY  
ONE BEDROOM + DEN LOFT

INTERIOR - 1010 SQ.FT.

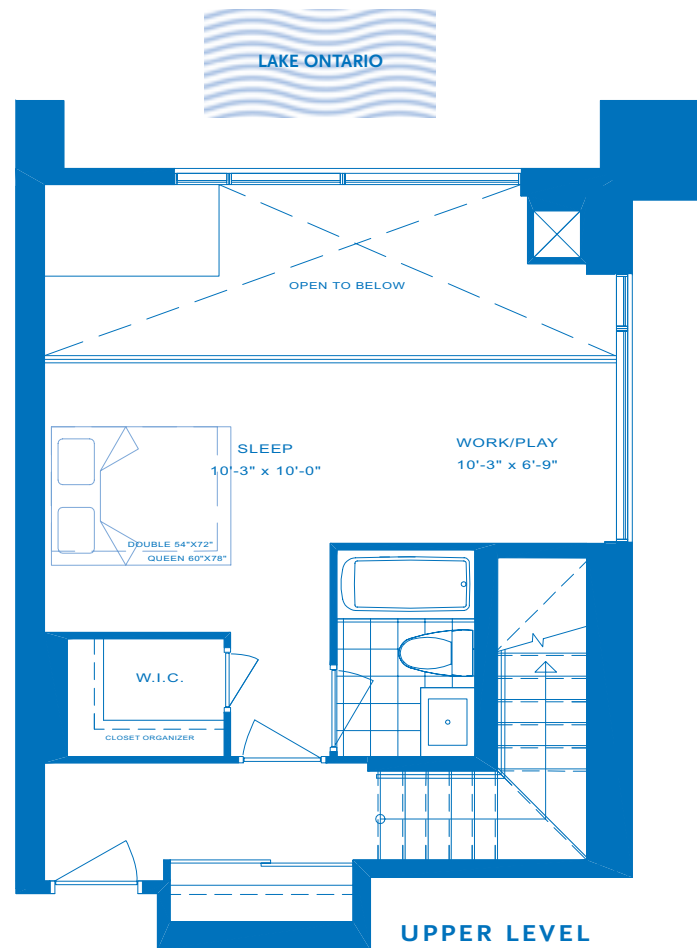
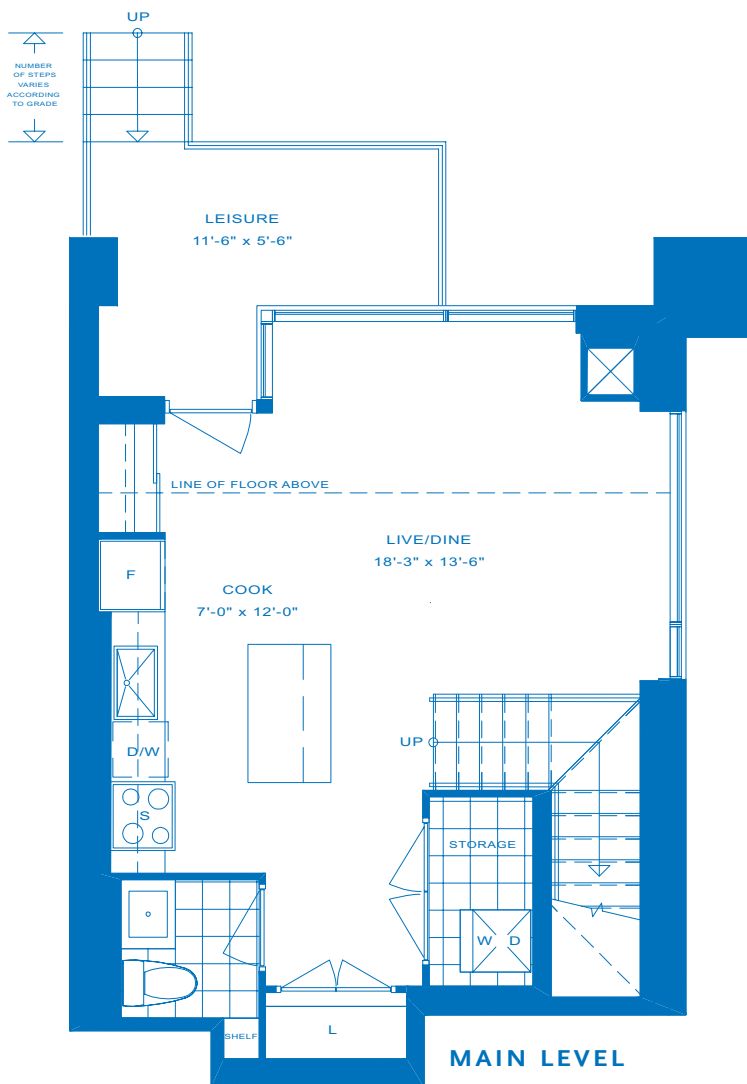
PORCH - 55 SQ.FT.

**TOTAL LIVING AREA - 1065 SQ.FT.**

# P1010



FLOORS P1-GROUND



  
**WATERSCAPES**  
THE CONDOMINIUM

[WWW.MONARCHGROUP.NET](http://WWW.MONARCHGROUP.NET)

  
**Monarch**

Sizes and specifications are subject to change without notice. E.&O.E. Actual usable floor space may vary from any stated floor area. Floor measurements, if any, were calculated on the middle floor of typical floor plates, such that units on lower floors may have less floor space due to thicker structural members, mechanical rooms, etc. while units on higher floors may have more floor space. Illustration is artist's impression.

# LAGOON

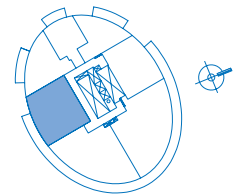
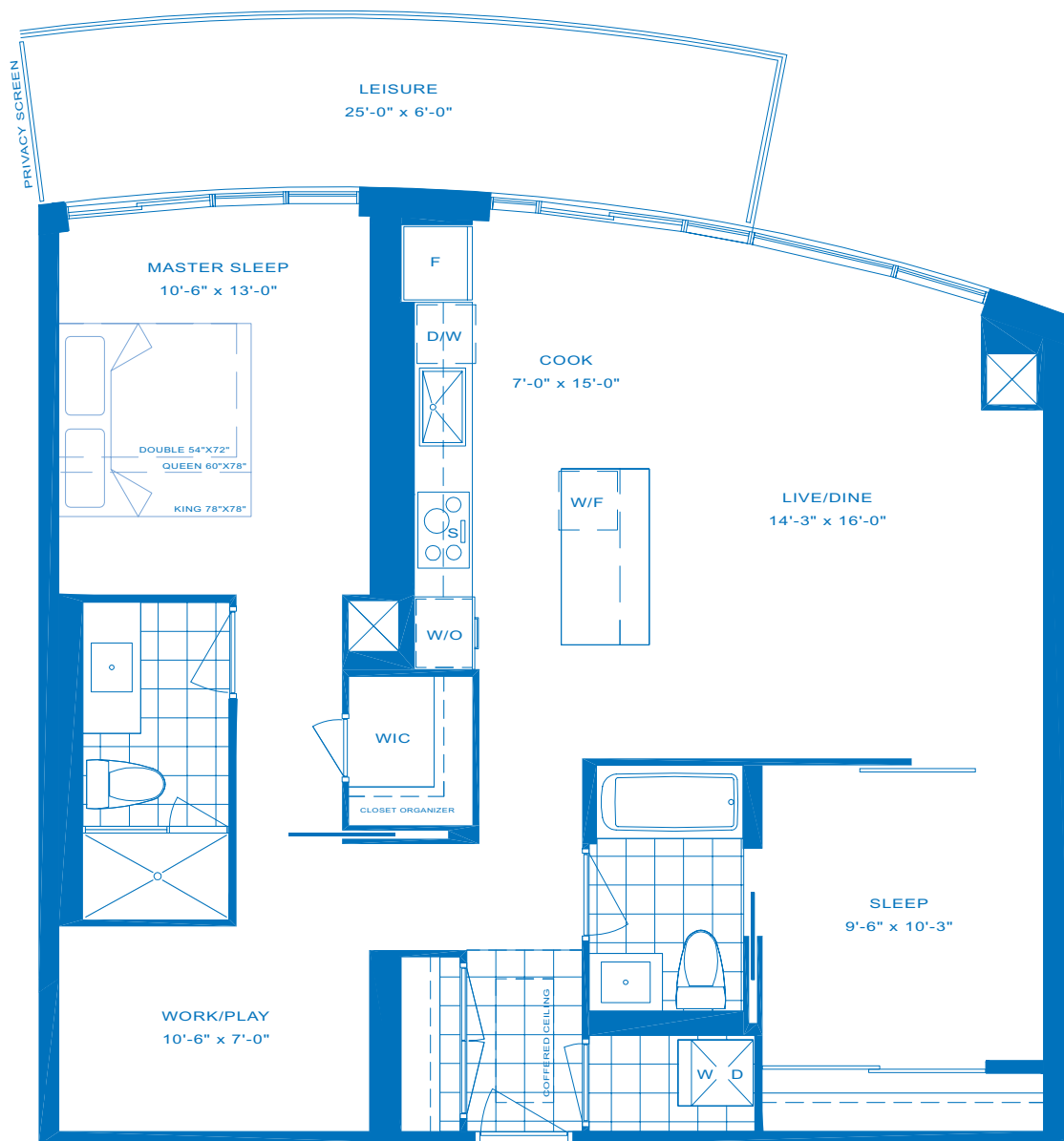
TWO BEDROOM + DEN

# T1090

INTERIOR - 1090 SQ.FT.

BALCONY - 145 SQ.FT.

**TOTAL LIVING AREA - 1235 SQ.FT.**



## FLOORS 26-29

*Balcony sizes vary on select floors.  
Ask a sales representative for details*



LAKE ONTARIO

**WATERSCAPES**  
THE CONDOMINIUM

[WWW.MONARCHGROUP.NET](http://WWW.MONARCHGROUP.NET)

**Monarch**

Sizes and specifications are subject to change without notice. E.&O.E. Actual usable floor space may vary from any stated floor area. Floor measurements, if any, were calculated on the middle floor of typical floor plates, such that units on lower floors may have less floor space due to thicker structural members, mechanical rooms, etc. while units on higher floors may have more floor space. Illustration is artist's impression.

# LAGOON

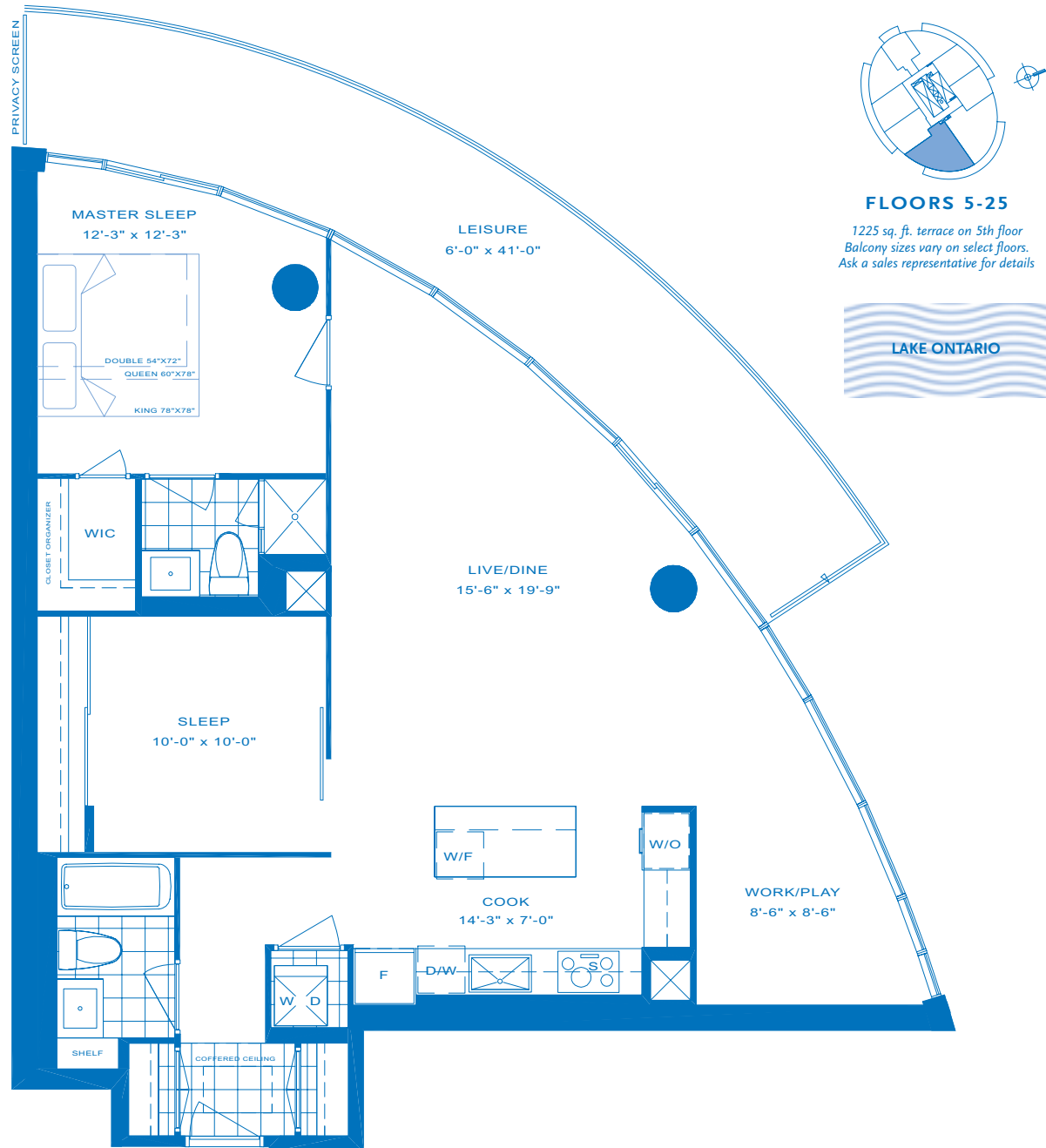
TWO BEDROOM + DEN

INTERIOR - 1105 SQ.FT.

BALCONY - 245 SQ.FT.

TOTAL LIVING AREA - 1350 SQ.FT.

# T1105



**WATERSCAPES**  
THE CONDOMINIUM

[WWW.MONARCHGROUP.NET](http://WWW.MONARCHGROUP.NET)

**Monarch**

Sizes and specifications are subject to change without notice. E.&O.E. Actual usable floor space may vary from any stated floor area. Floor measurements, if any, were calculated on the middle floor of typical floor plates, such that units on lower floors may have less floor space due to thicker structural members, mechanical rooms, etc. while units on higher floors may have more floor space. Illustration is artist's impression.



# LAGOON

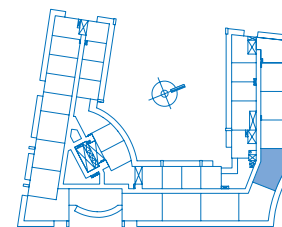
TWO BEDROOM + DEN

INTERIOR - 1130 SQ.FT.

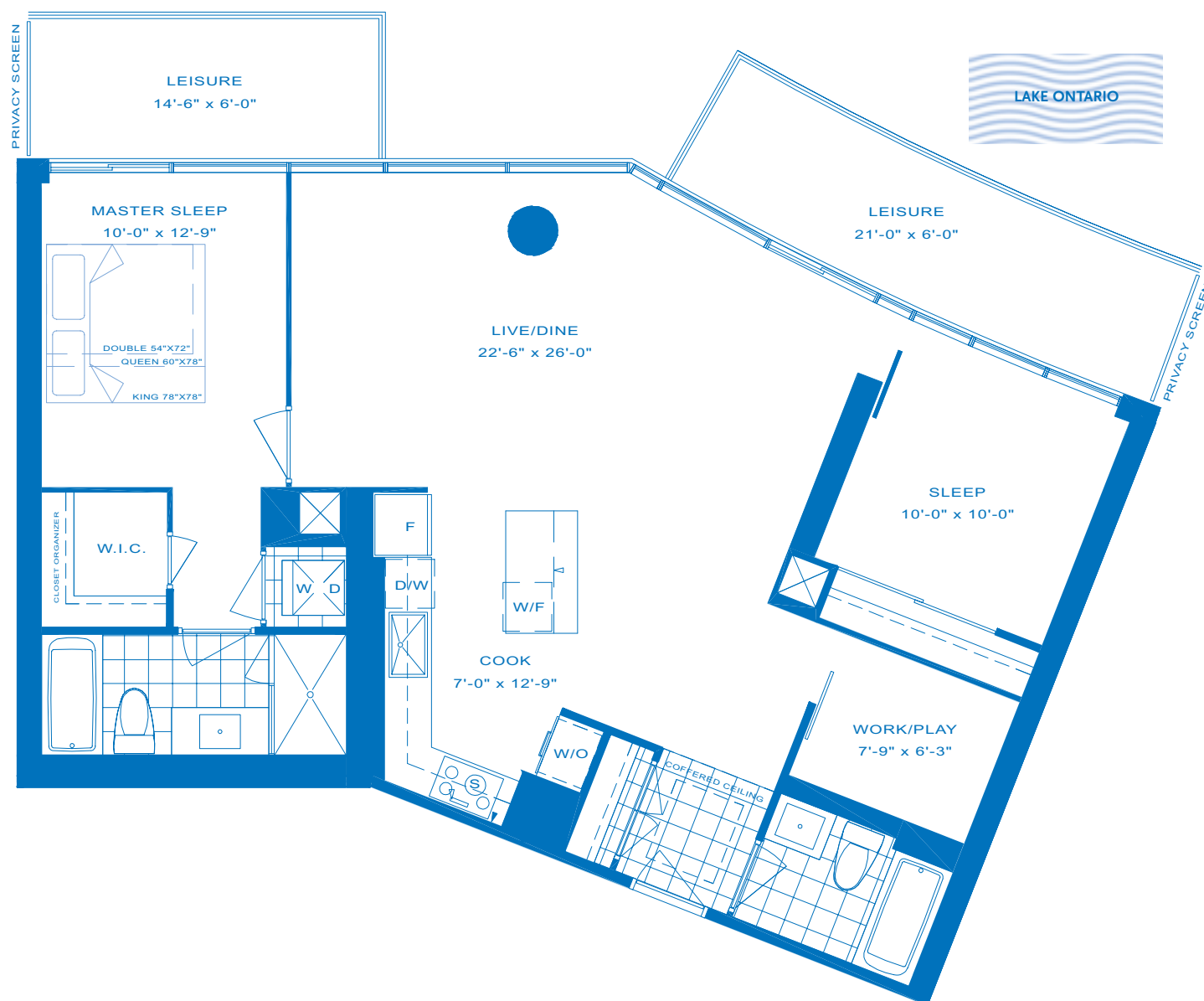
BALCONY - 160 SQ.FT.

**TOTAL LIVING AREA - 1290 SQ.FT.**

# P1130



FLOORS 2-4



**WATERSCAPES**  
THE CONDOMINIUM

[WWW.MONARCHGROUP.NET](http://WWW.MONARCHGROUP.NET)

**Monarch**

Sizes and specifications are subject to change without notice. E.&O.E. Actual usable floor space may vary from any stated floor area. Floor measurements, if any, were calculated on the middle floor of typical floor plates, such that units on lower floors may have less floor space due to thicker structural members, mechanical rooms, etc. while units on higher floors may have more floor space. Illustration is artist's impression.

# LAGOON

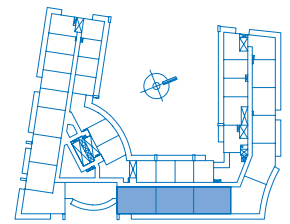
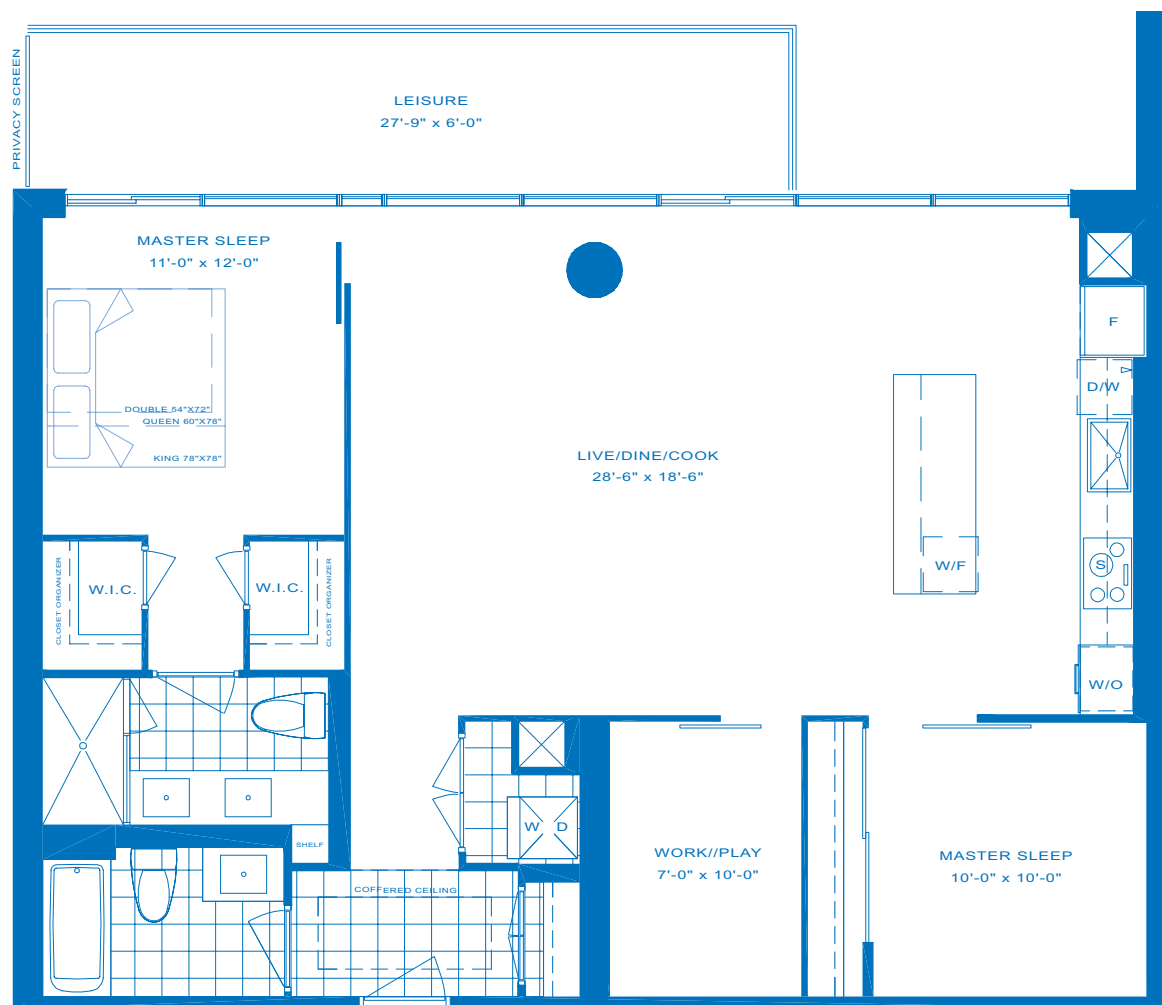
TWO BEDROOM + DEN

INTERIOR - 1230 SQ.FT.

BALCONY - 160 SQ.FT.

TOTAL LIVING AREA - 1390 SQ.FT.

# P1230



FLOORS GROUND-4

Balcony sizes vary on select floors.  
Ask a sales representative for details



  
**WATERSCAPES**  
THE CONDOMINIUM

[WWW.MONARCHGROUP.NET](http://WWW.MONARCHGROUP.NET)

  
**Monarch**

Sizes and specifications are subject to change without notice. E.&O.E. Actual usable floor space may vary from any stated floor area. Floor measurements, if any, were calculated on the middle floor of typical floor plates, such that units on lower floors may have less floor space due to thicker structural members, mechanical rooms, etc. while units on higher floors may have more floor space. Illustration is artist's impression.

# LAGOON

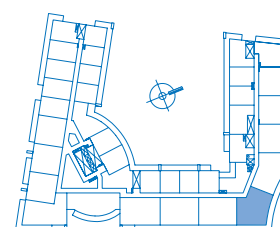
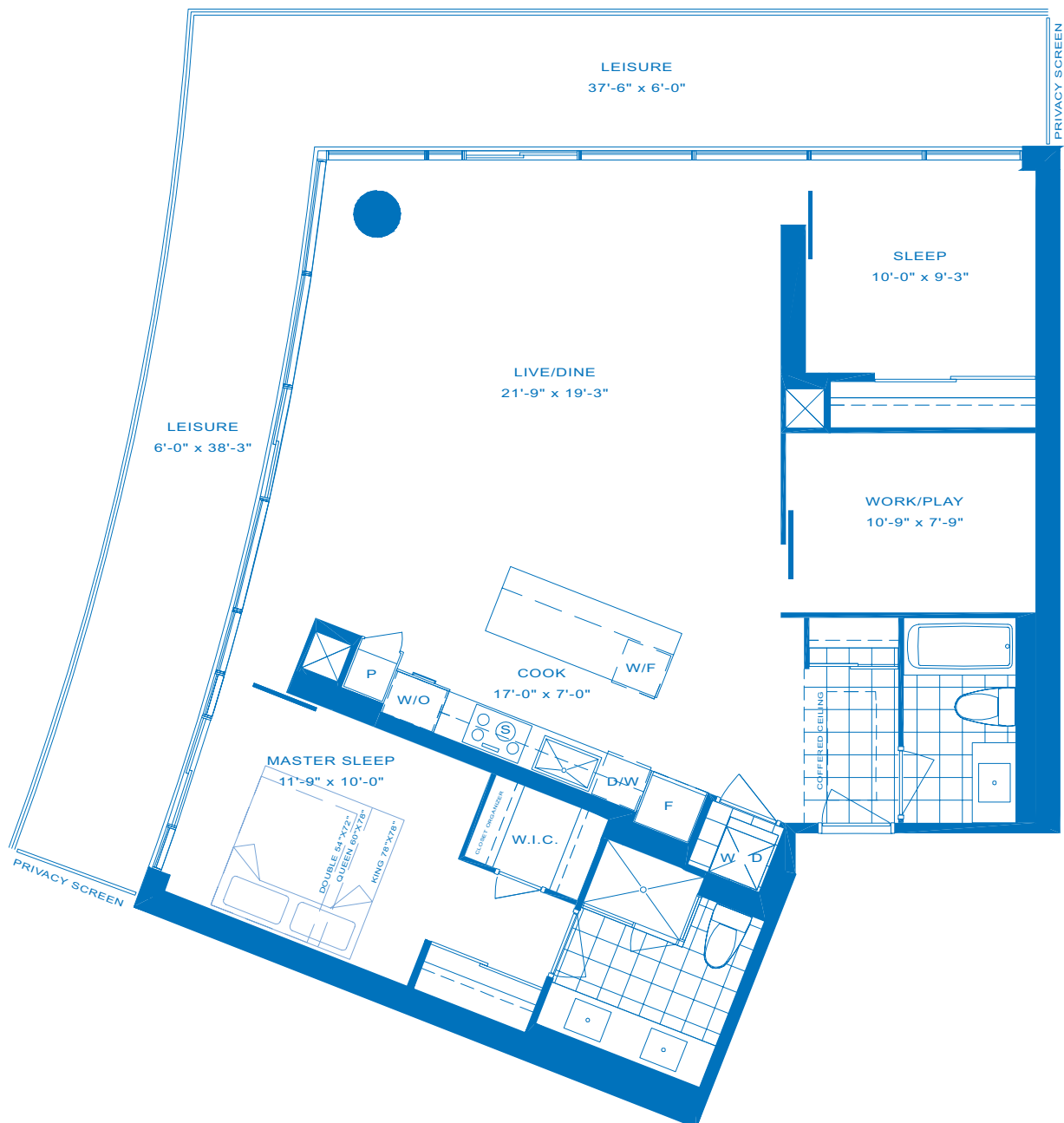
TWO BEDROOM + DEN

# P1245

INTERIOR - 1245 SQ.FT.

BALCONY - 390 SQ.FT.

**TOTAL LIVING AREA - 1635 SQ.FT.**



FLOORS 2-4



LAKE ONTARIO

**WATERSCAPES**  
THE CONDOMINIUM

[WWW.MONARCHGROUP.NET](http://WWW.MONARCHGROUP.NET)

**Monarch**

Sizes and specifications are subject to change without notice. E.&O.E. Actual usable floor space may vary from any stated floor area. Floor measurements, if any, were calculated on the middle floor of typical floor plates, such that units on lower floors may have less floor space due to thicker structural members, mechanical rooms, etc. while units on higher floors may have more floor space. Illustration is artist's impression.

# LAGOON

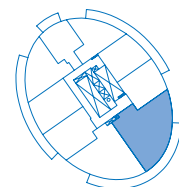
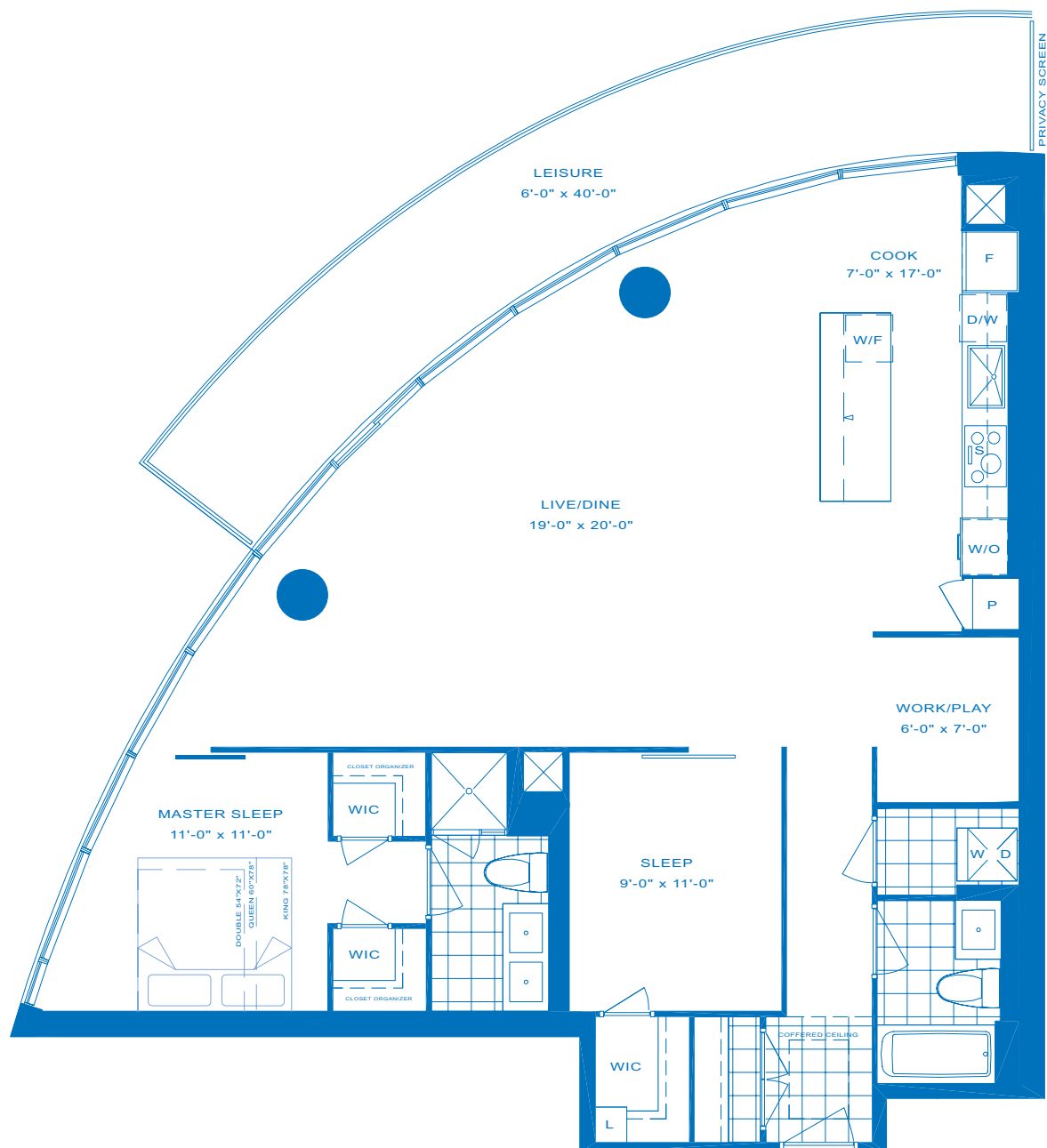
TWO BEDROOM + DEN

INTERIOR - 1275 SQ.FT.

BALCONY - 245 SQ.FT.

TOTAL LIVING AREA - 1520 SQ.FT.

# T1275



## FLOORS 5-25

1230 sq. ft. terrace on 5th floor  
Balcony sizes vary on select floors  
Ask a sales representative for details



**WATERSCAPES**  
THE CONDOMINIUM

[WWW.MONARCHGROUP.NET](http://WWW.MONARCHGROUP.NET)

**Monarch**

Sizes and specifications are subject to change without notice. E.&O.E. Actual usable floor space may vary from any stated floor area. Floor measurements, if any, were calculated on the middle floor of typical floor plates, such that units on lower floors may have less floor space due to thicker structural members, mechanical rooms, etc. while units on higher floors may have more floor space. Illustration is artist's impression.

# LAGOON

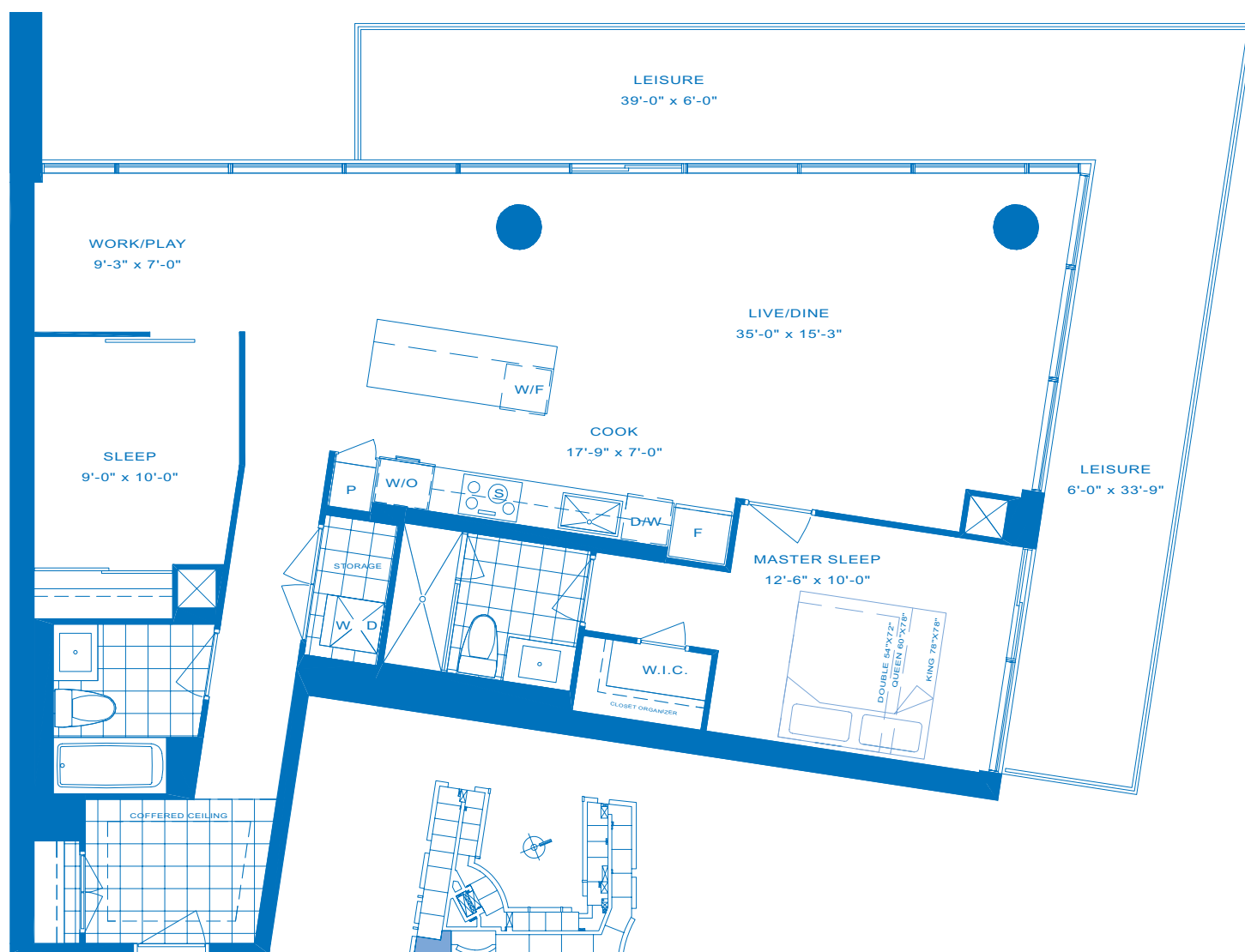
TWO BEDROOM + DEN

# P1285

INTERIOR - 1285 SQ.FT.

BALCONY - 370 SQ.FT.

**TOTAL LIVING AREA - 1655 SQ.FT.**



## FLOORS GROUND-4

450 sq. ft. terrace on ground floor  
Ask a sales representative for details



LAKE ONTARIO

**WATERSCAPES**  
THE CONDOMINIUM

[WWW.MONARCHGROUP.NET](http://WWW.MONARCHGROUP.NET)

**Monarch**

Sizes and specifications are subject to change without notice. E.&O.E. Actual usable floor space may vary from any stated floor area. Floor measurements, if any, were calculated on the middle floor of typical floor plates, such that units on lower floors may have less floor space due to thicker structural members, mechanical rooms, etc. while units on higher floors may have more floor space. Illustration is artist's impression.

# LAGOON

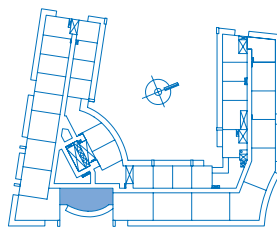
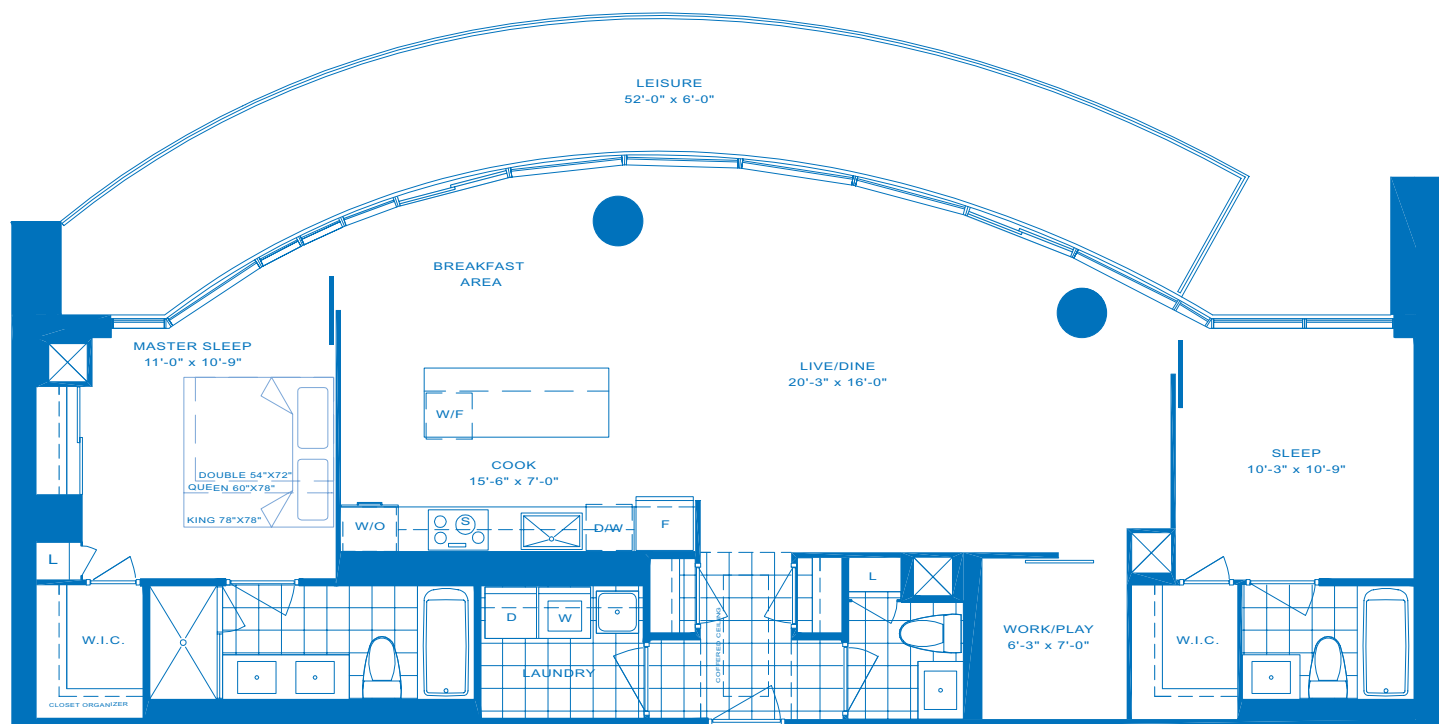
TWO BEDROOM + DEN

# P1315

INTERIOR - 1315 SQ.FT.

BALCONY - 290 SQ.FT.

**TOTAL LIVING AREA - 1605 SQ.FT.**



## FLOORS 2-4

340 sq. ft. terrace on 2nd floor  
Ask a sales representative for details



**WATERSCAPES**  
THE CONDOMINIUM

[WWW.MONARCHGROUP.NET](http://WWW.MONARCHGROUP.NET)

**Monarch**

Sizes and specifications are subject to change without notice. E.&O.E. Actual usable floor space may vary from any stated floor area. Floor measurements, if any, were calculated on the middle floor of typical floor plates, such that units on lower floors may have less floor space due to thicker structural members, mechanical rooms, etc. while units on higher floors may have more floor space. Illustration is artist's impression.

# LAGOON

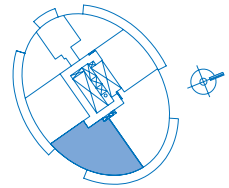
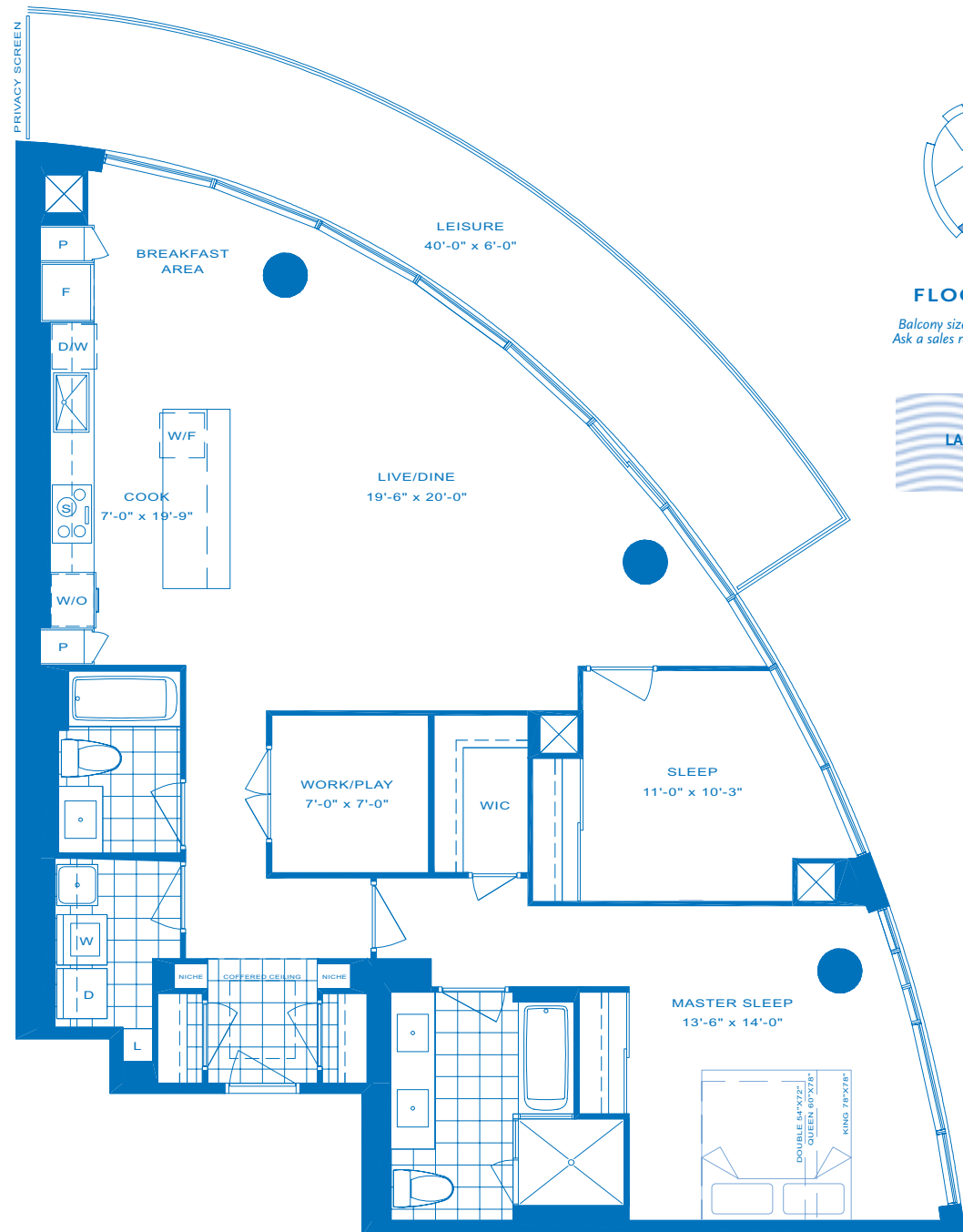
TWO BEDROOM + DEN

# T1405

INTERIOR - 1405 SQ.FT.

BALCONY - 245 SQ.FT.

**TOTAL LIVING AREA - 1650 SQ.FT.**



## FLOORS 26-29

Balcony sizes vary on select floors.  
Ask a sales representative for details



**WATERSCAPES**  
THE CONDOMINIUM

[WWW.MONARCHGROUP.NET](http://WWW.MONARCHGROUP.NET)

**Monarch**

Sizes and specifications are subject to change without notice. E.&O.E. Actual usable floor space may vary from any stated floor area. Floor measurements, if any, were calculated on the middle floor of typical floor plates, such that units on lower floors may have less floor space due to thicker structural members, mechanical rooms, etc. while units on higher floors may have more floor space. Illustration is artist's impression.

# LAGOON

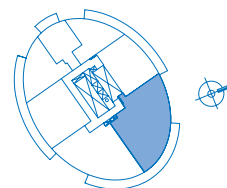
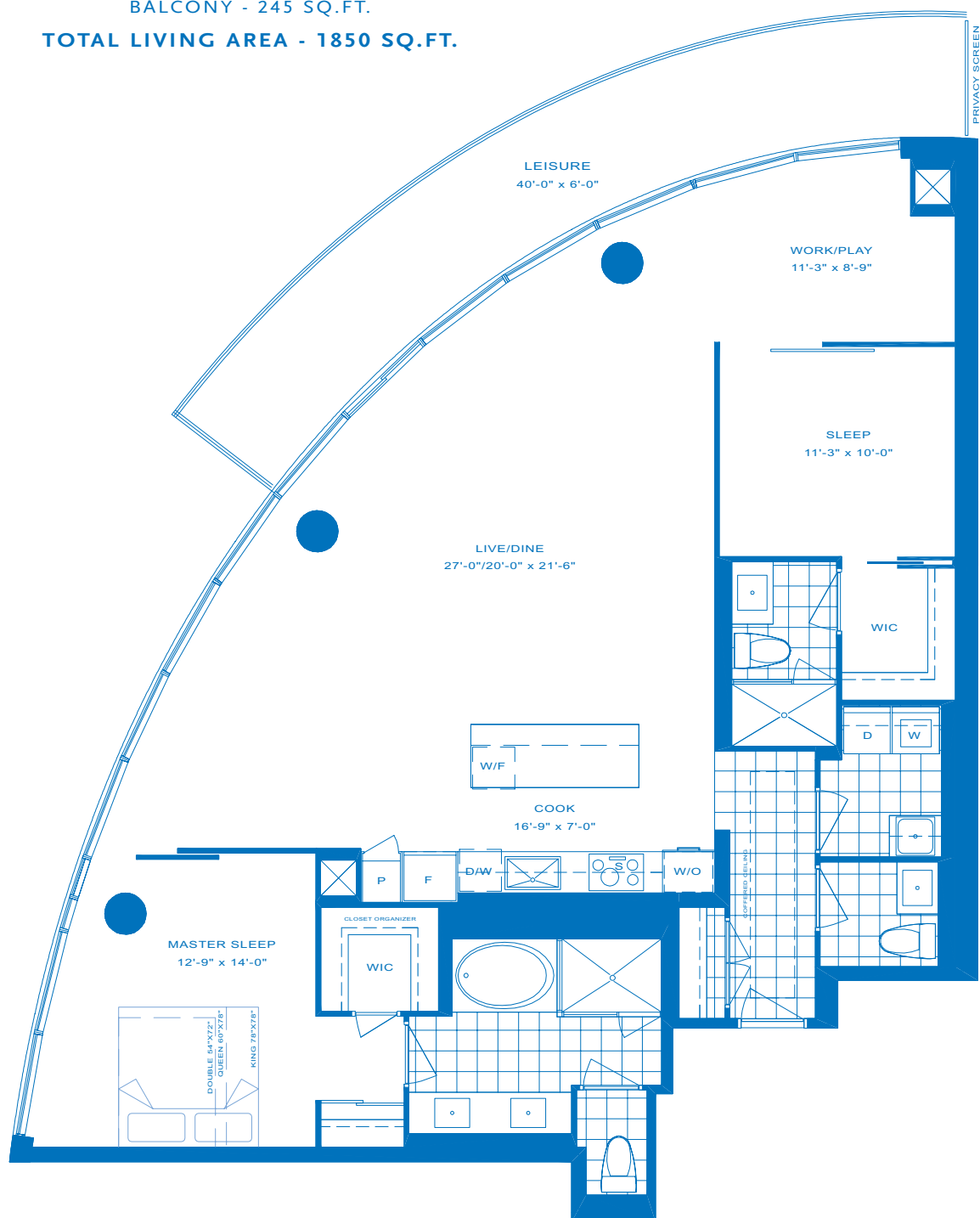
TWO BEDROOM + DEN

INTERIOR - 1605 SQ.FT.

BALCONY - 245 SQ.FT.

**TOTAL LIVING AREA - 1850 SQ.FT.**

# T1605



## FLOORS 26-29

Balcony sizes vary on select floors.  
Ask a sales representative for details



**WATERSCAPES**  
THE CONDOMINIUM

[WWW.MONARCHGROUP.NET](http://WWW.MONARCHGROUP.NET)

**Monarch**

Sizes and specifications are subject to change without notice. E.&O.E. Actual usable floor space may vary from any stated floor area. Floor measurements, if any, were calculated on the middle floor of typical floor plates, such that units on lower floors may have less floor space due to thicker structural members, mechanical rooms, etc. while units on higher floors may have more floor space. Illustration is artist's impression.